

Challenge  
for a civilized society  
showcase 5



visit: [challengeforacivilizedsociety.com](http://challengeforacivilizedsociety.com)





Research dedicated to exploring the hidden history of humanity.

Showcase 5

Enjoy!

"Science at its best is an open-minded method of inquiry, not a belief system...".  
Rupert Sheldrake

-----  
You can download a pdf file of this document online.  
-----

[challengeforacivilizedsociety.com](http://challengeforacivilizedsociety.com)

If I used photo's in this document, which I'm not allowed to use, please let me know. I will remove this photo(s) immediately. Sorry in advance...

# Table of contents

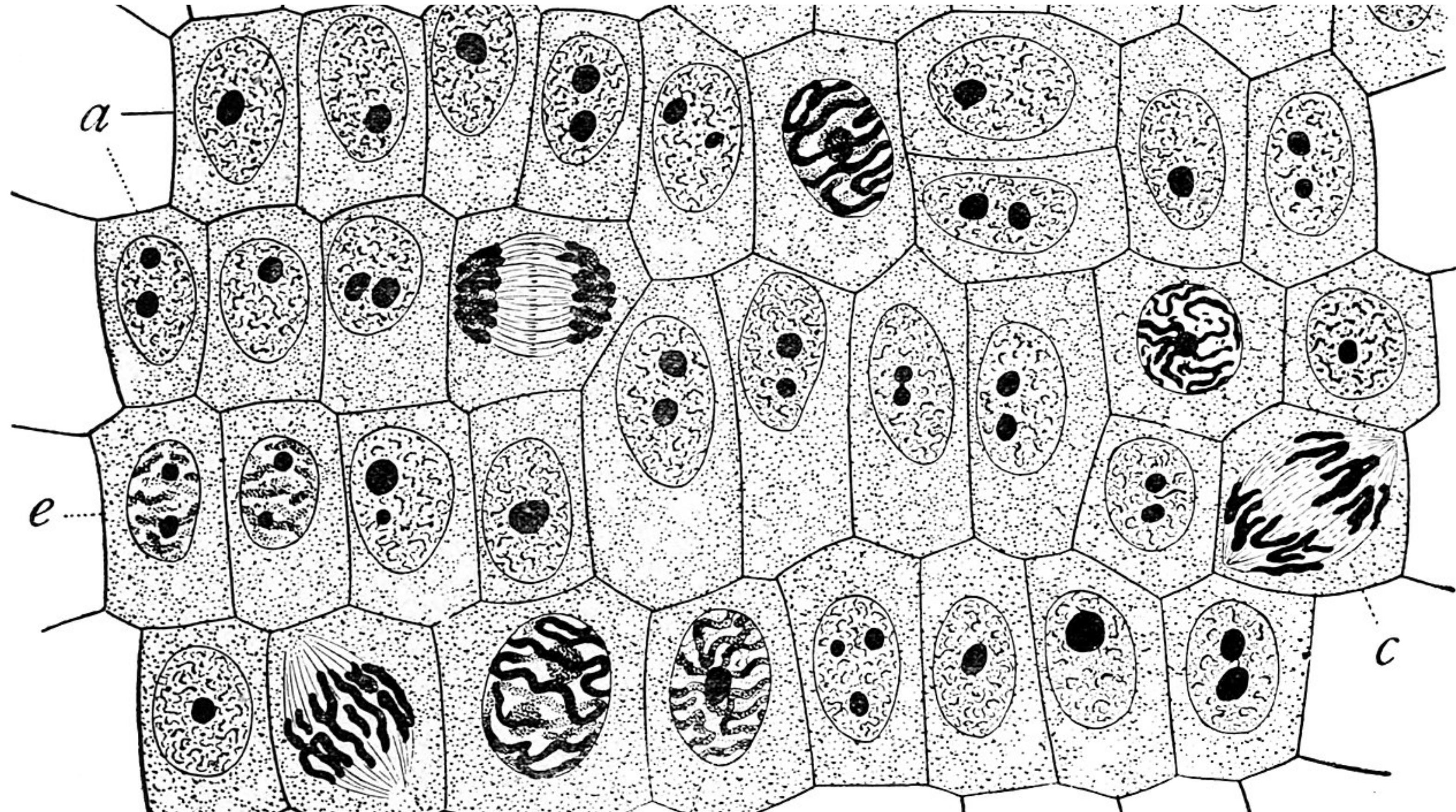
Cell (biology)	6
Megalithic (Polygonal) masonry/ the Power of Nature	9
Turkey	13
Southeastern Europe/western Asia +	20
Rare photo's & images @ Random	27

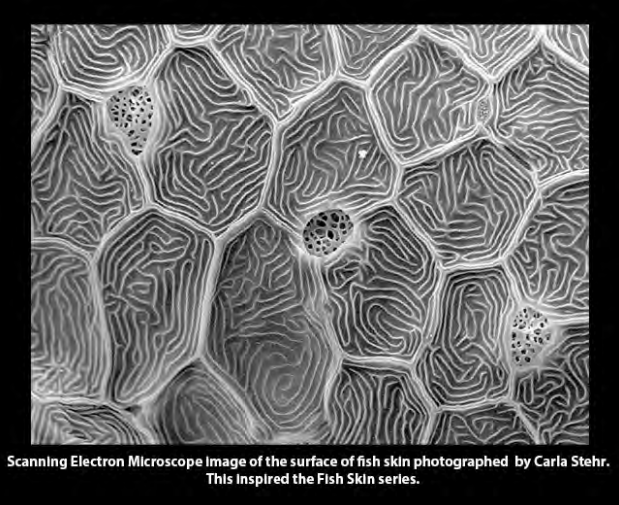
questions?  
[info@challengeforacivilizedsociety.com](mailto:info@challengeforacivilizedsociety.com)



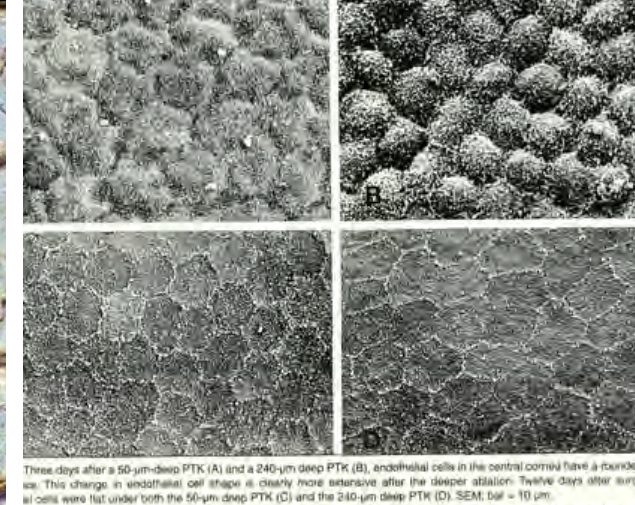
# Cell (biology)

The cell is the basic structural and functional unit of all forms of life. Every cell consists of cytoplasm enclosed within a membrane, and contains many macromolecules such as proteins, DNA and RNA, as well as many small molecules of nutrients and metabolites. The term comes from the Latin word *cellula* meaning 'small room'. [wikipedia]

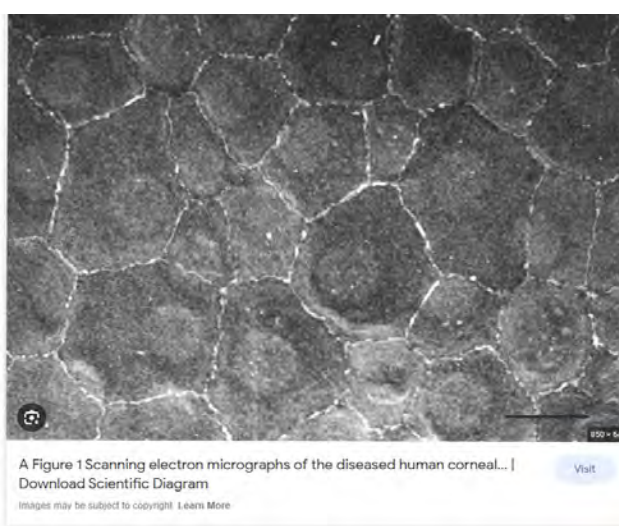
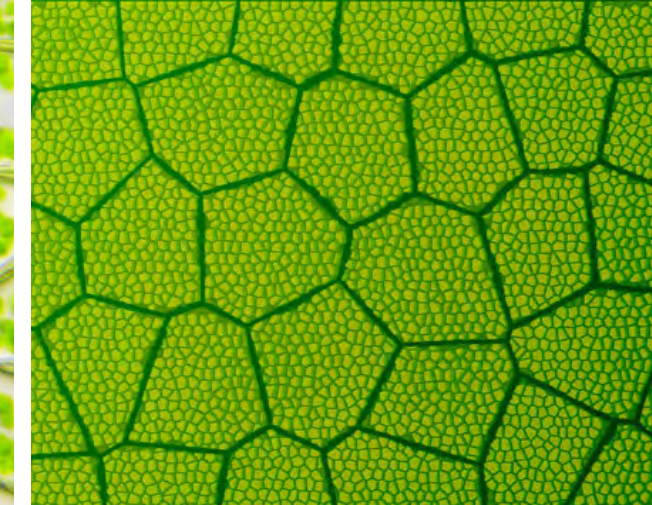
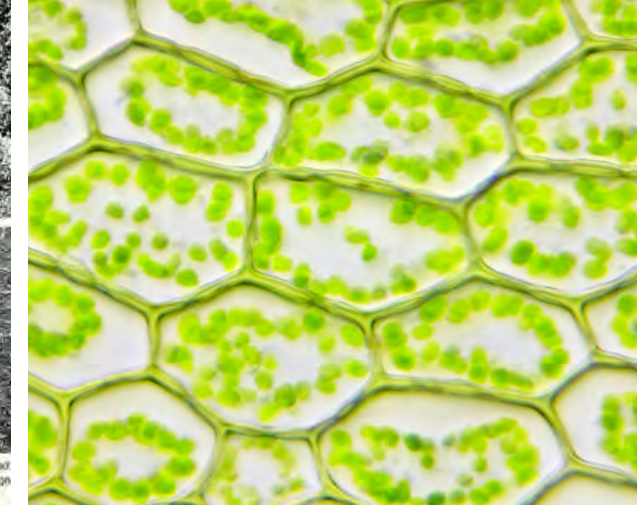




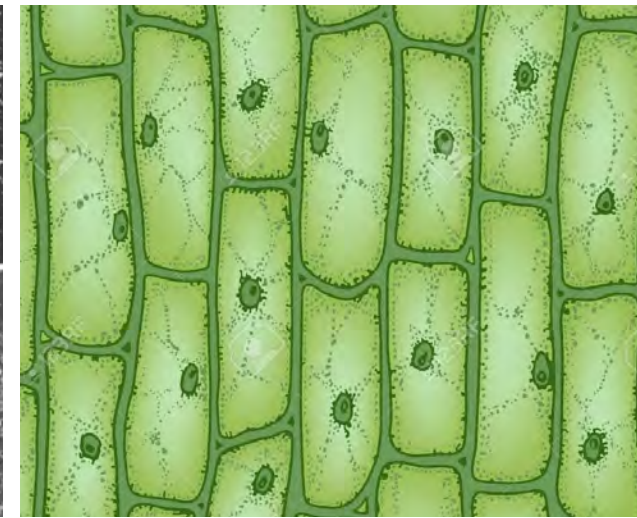
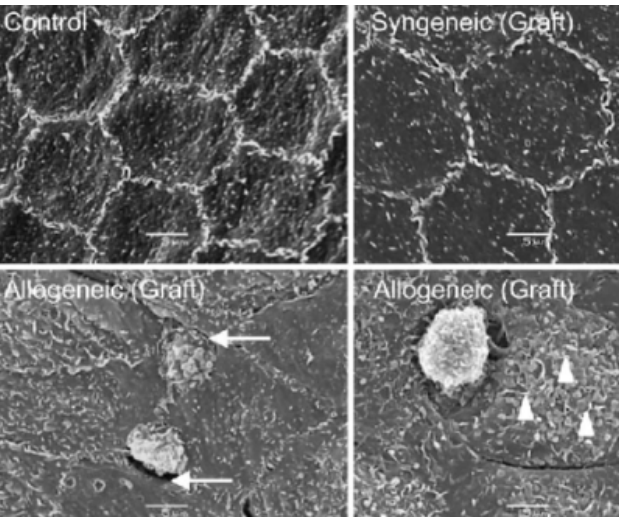
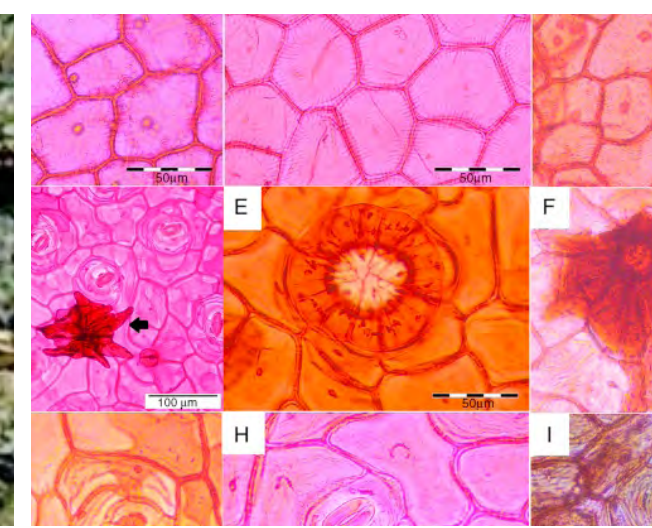
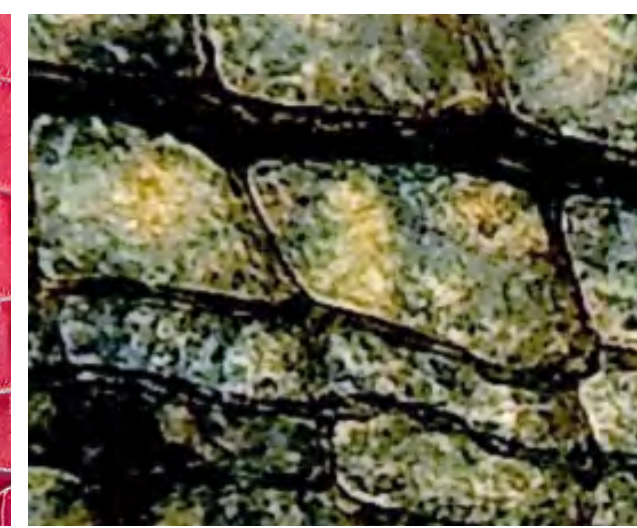
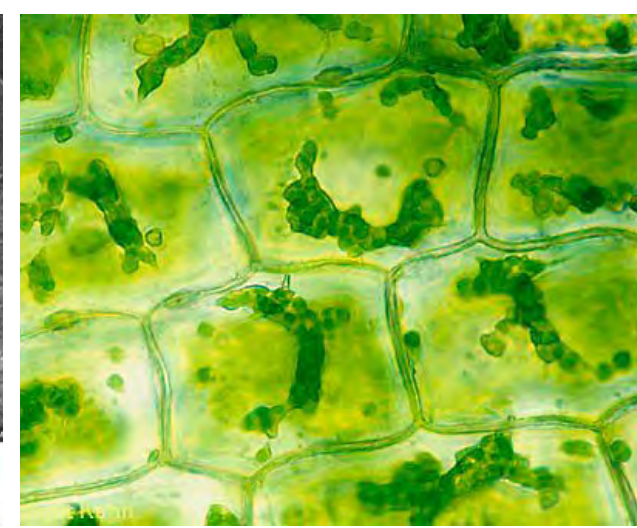
Scanning Electron Microscope Image of the surface of fish skin photographed by Carla Stehr. This inspired the Fish Skin series.



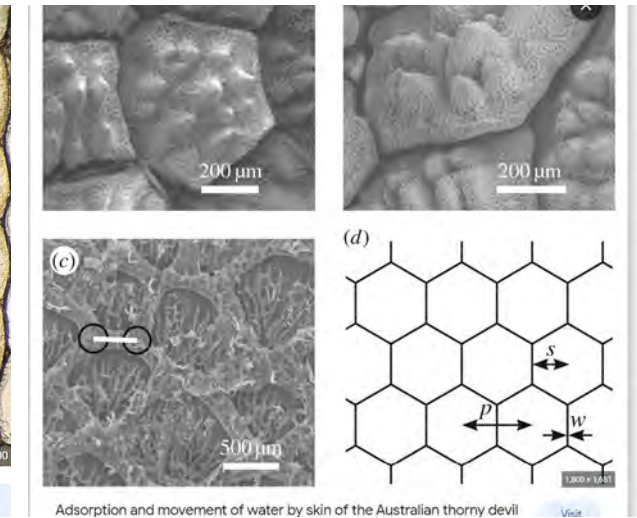
Three days after a 50-µm-deep PTK (A) and a 240-µm deep PTK (B), endothelial cells in the central cornea have a rounded appearance. This change in endothelial cell shape is clearly more extensive after the deeper ablation. Twelve days after surgery all cells were flat under both the 50-µm deep PTK (C) and the 240-µm deep PTK (D). SEM; bar = 10 µm.



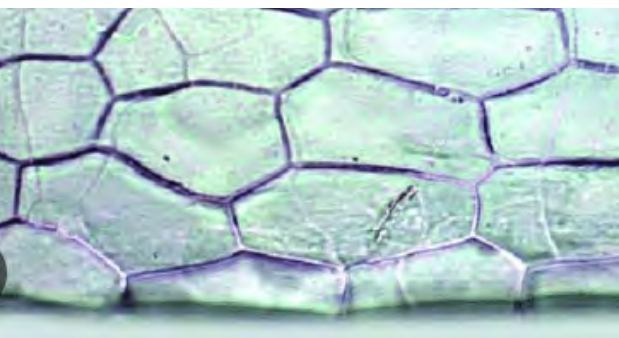
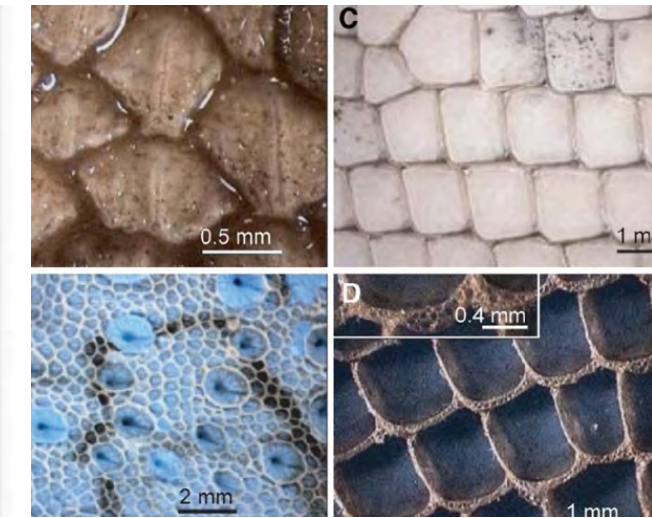
A Figure 1 Scanning electron micrographs of the diseased human cornea... | Download Scientific Diagram



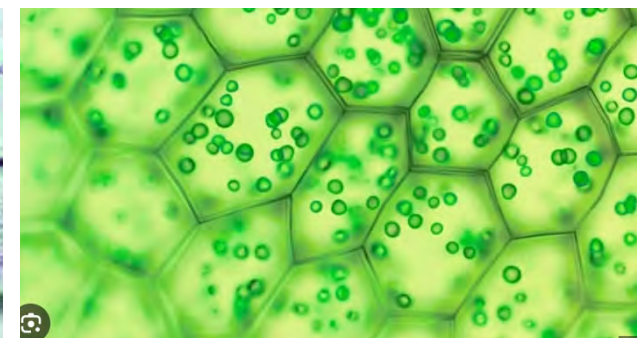
Macro, detail of lizard skin (gecko, Phelsuma)



Adsorption and movement of water by skin of the Australian thorny devil



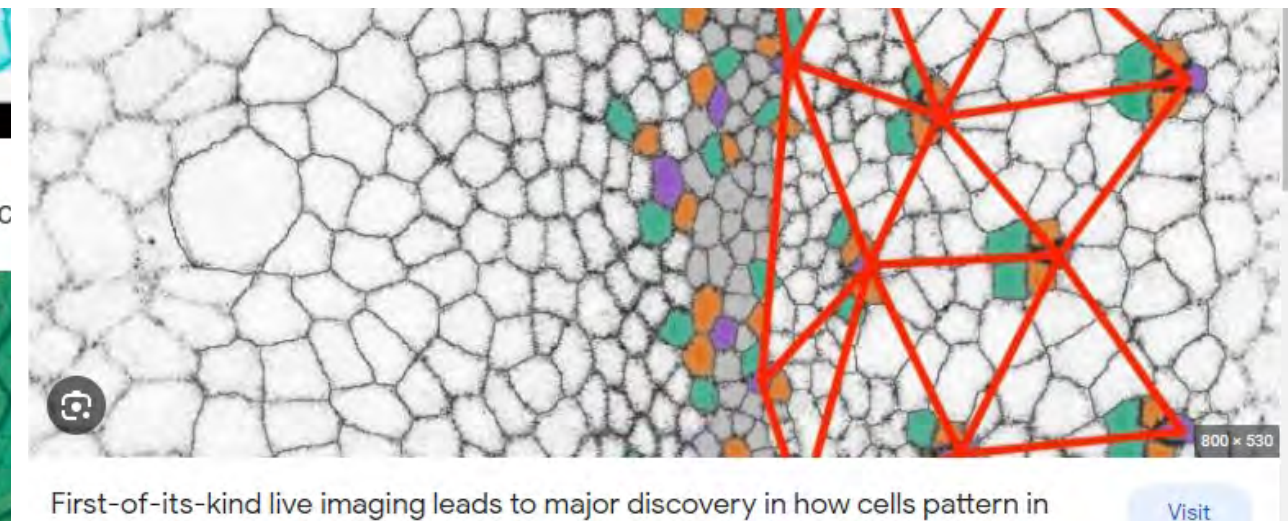
Cuticle of Tibetan antelope (Pantholops gongsonii) under microscope... | Download Scientific Diagram



Generic green plant cells under a microscope. Seamless looping animation.

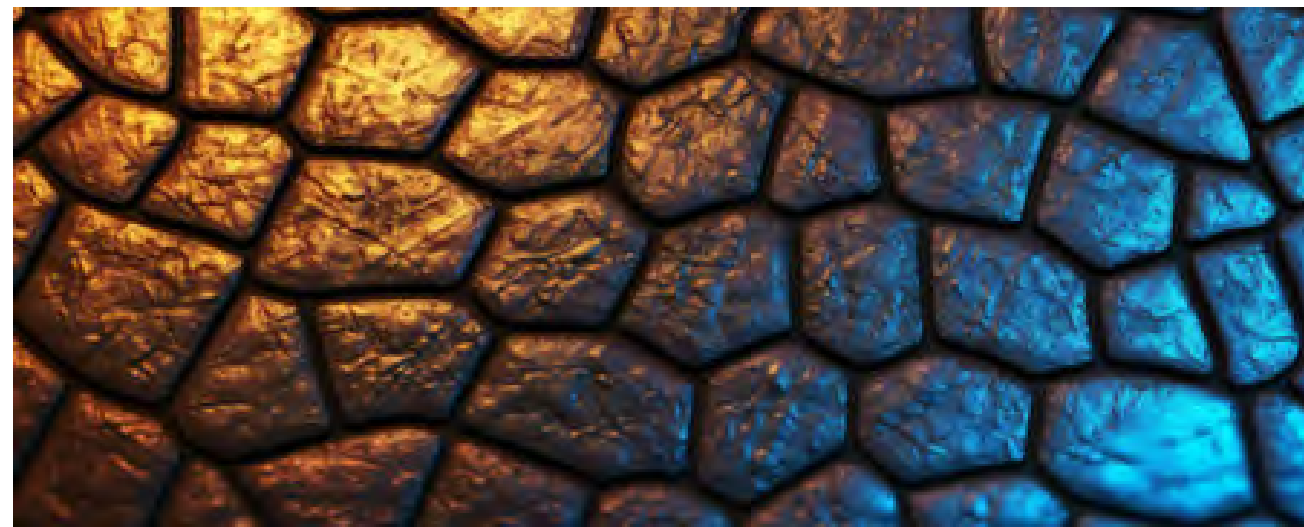
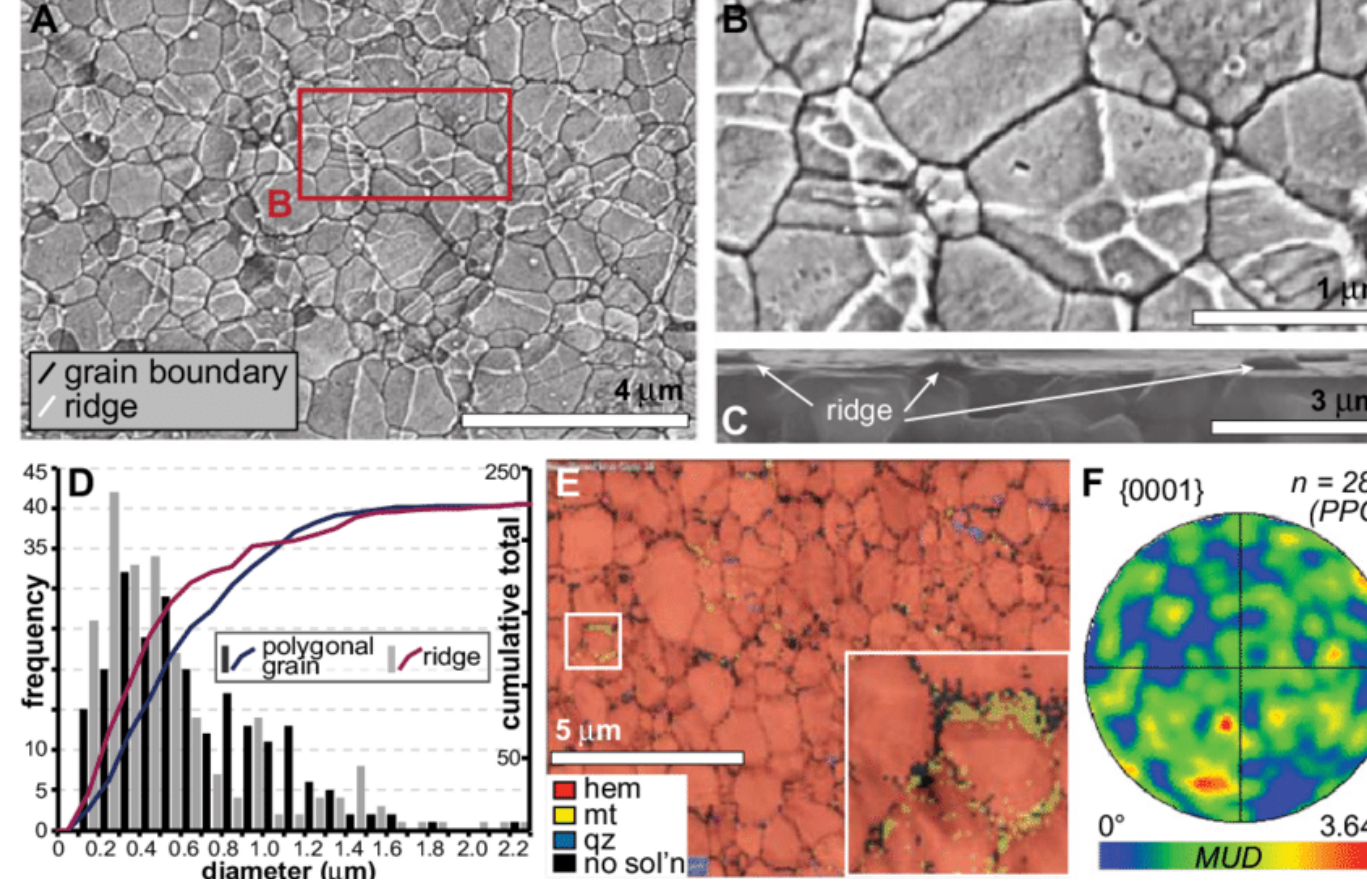
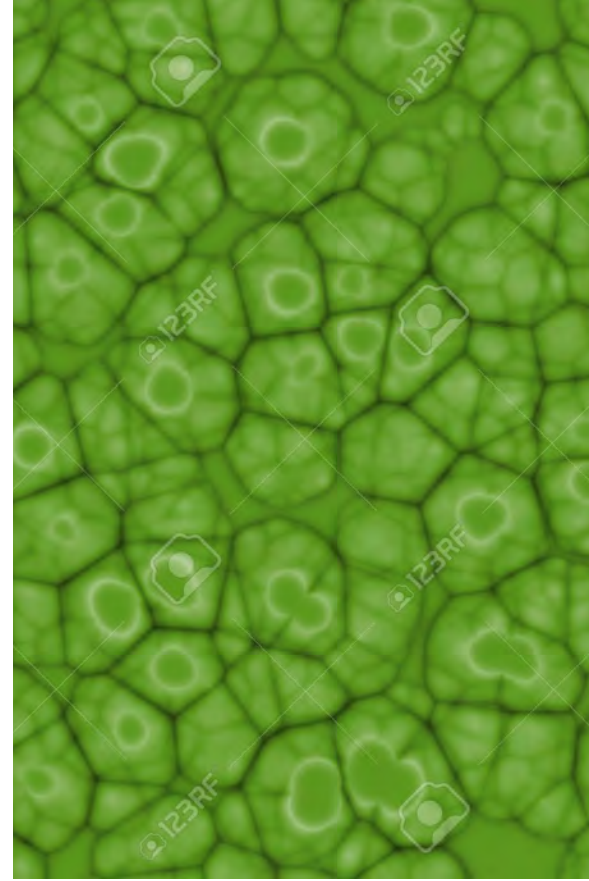


Plant cell under the microscope



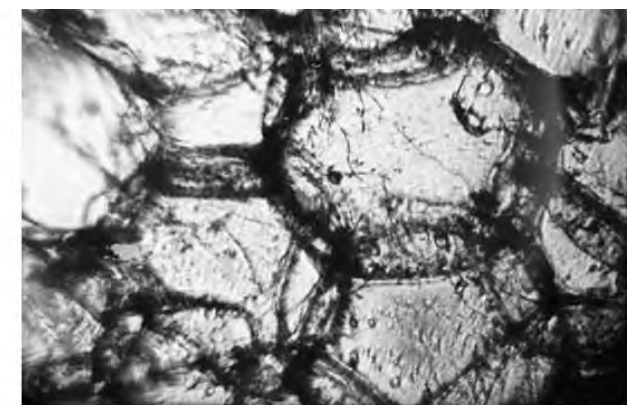
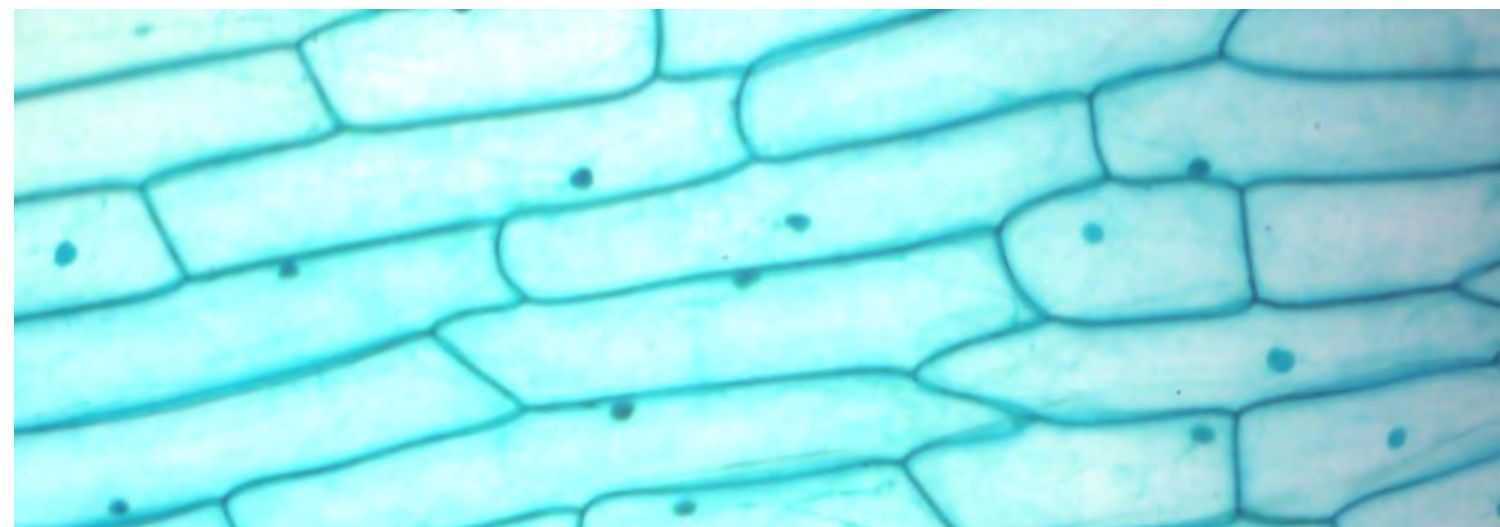
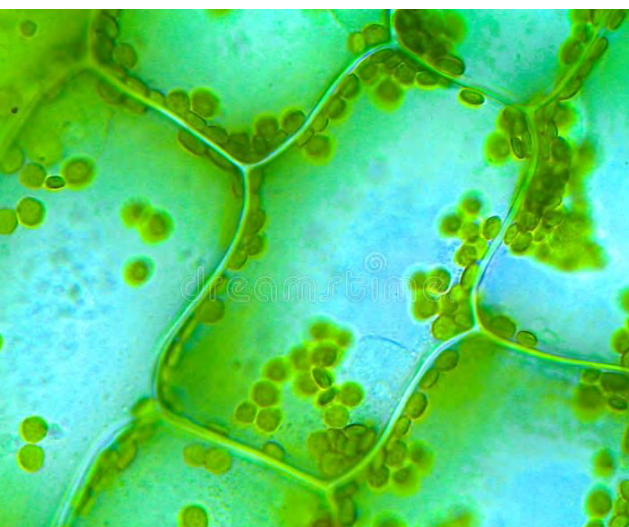
First-of-its-kind live imaging leads to major discovery in how cells pattern in plants

Challenge for a civilized society • 5



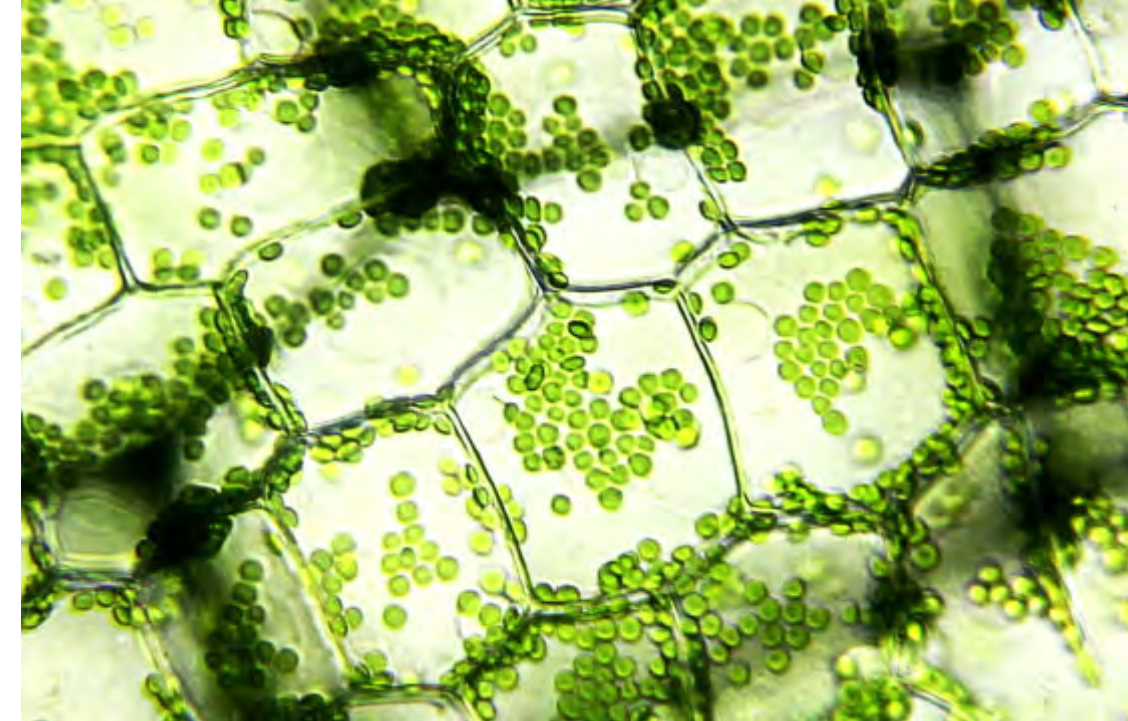
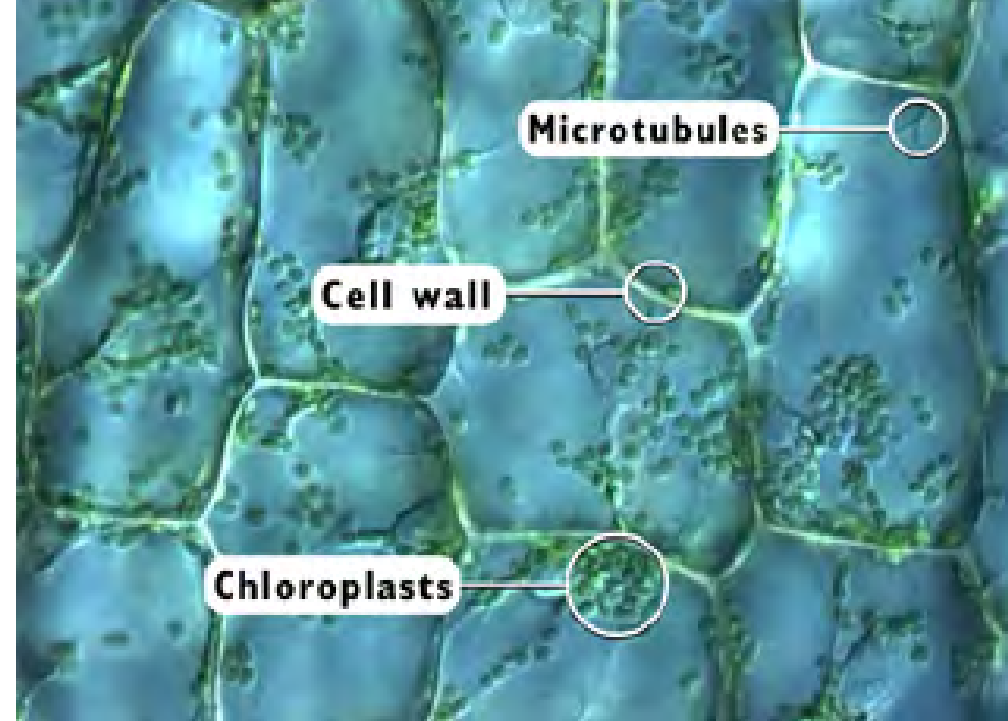
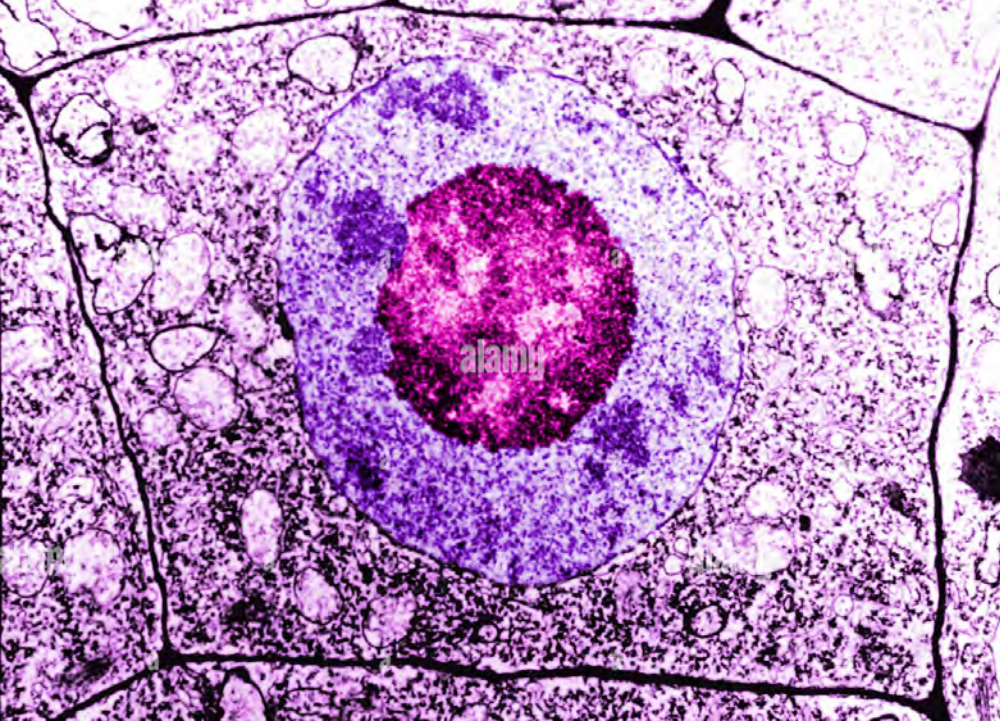
11. Vegetable Cells forming a Membrane.—With a pair of forceps peel off a thin layer of the covering of a fresh onion bulb. Examine it either in water or in water after staining with a solution of iodine (H). Observe the cells (fig. 57) with well-defined walls.

Fig. 57.—Cells from bulb of a fresh onion forming a membrane. H, cell membrane.

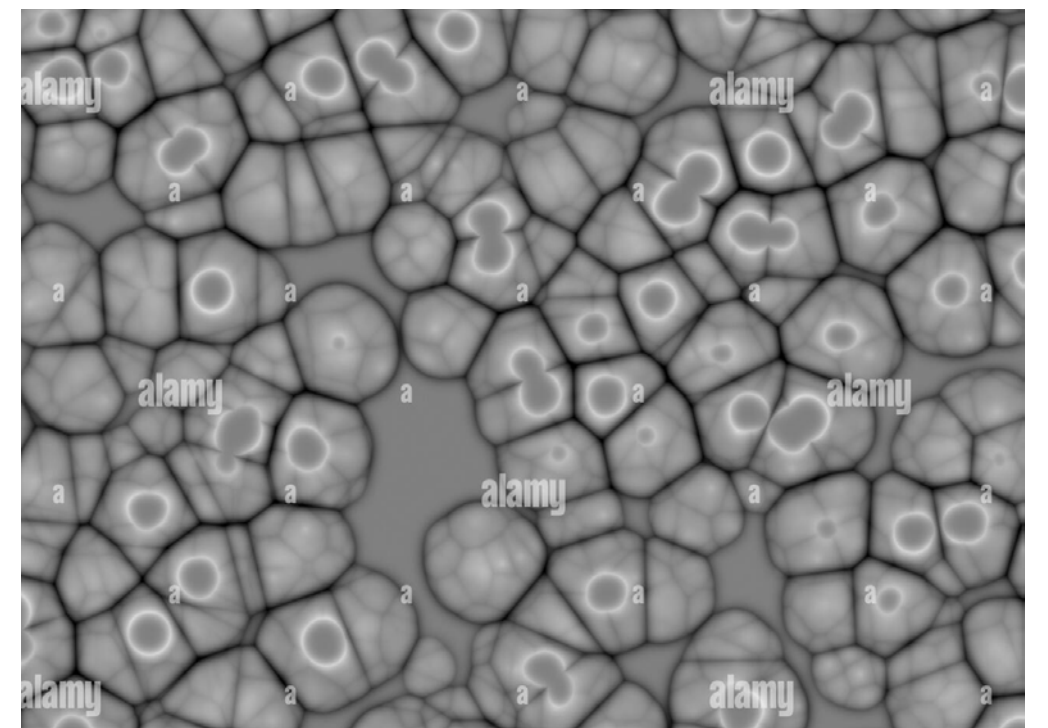
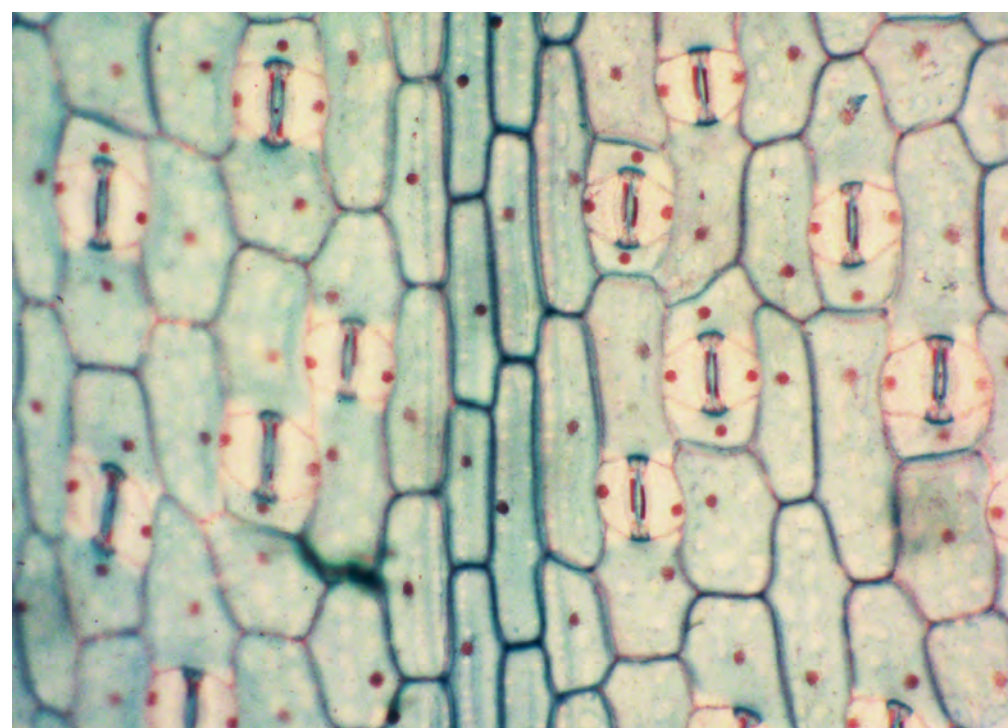
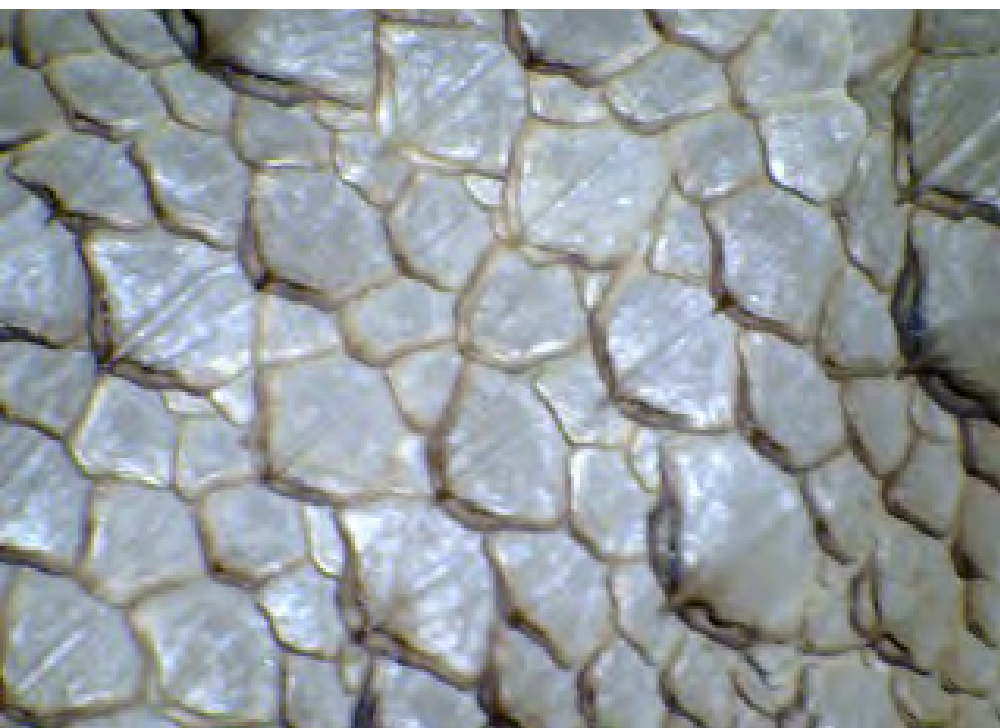


**FIGURE 29** Cells from *Sambucus nigra*, the common elder, through a Leeuwenhoek lens. In 1674 Leeuwenhoek sent to London his first four packets of specimens (see also Figure 27). One of the packets contained remarkably fine sections of pith from the elder tree. Here we

Dicot Leaf Epidermis, w.m. Microscope

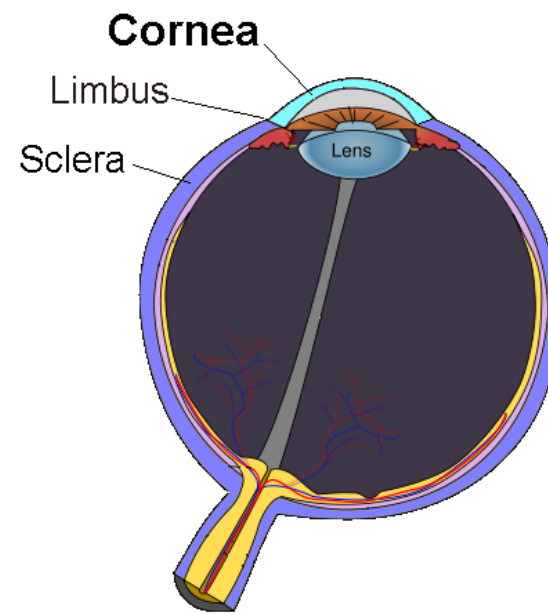
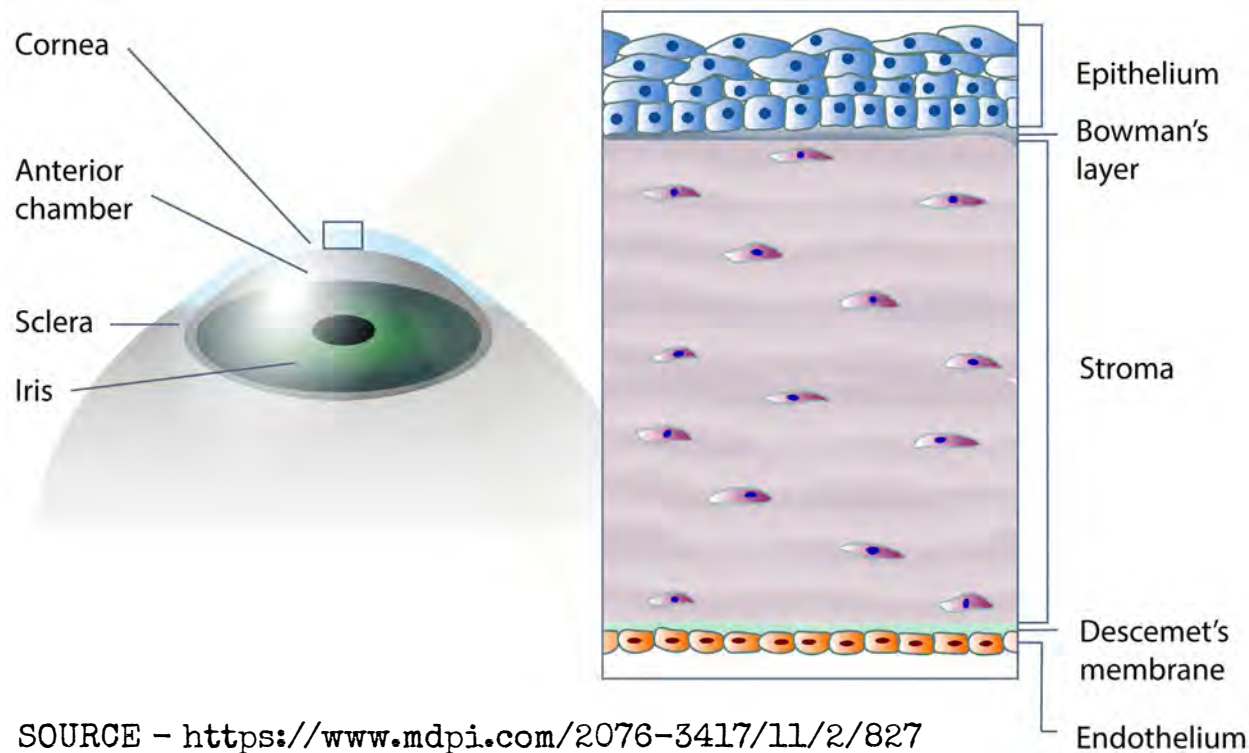


electron-microscopy-of-a-normal-human-cell-the-cell-membrane-nucleus



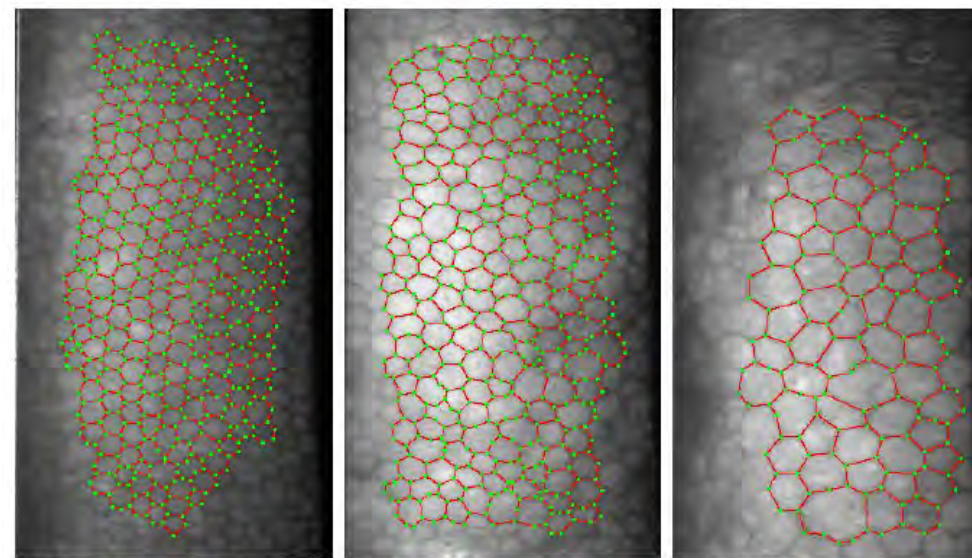
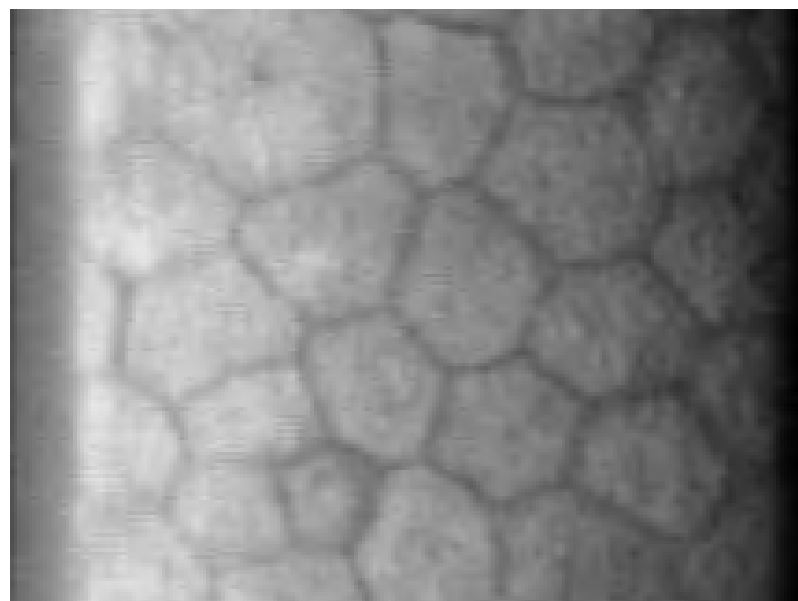
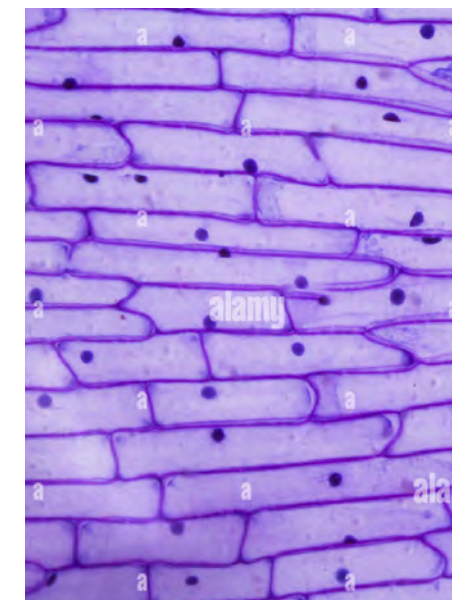
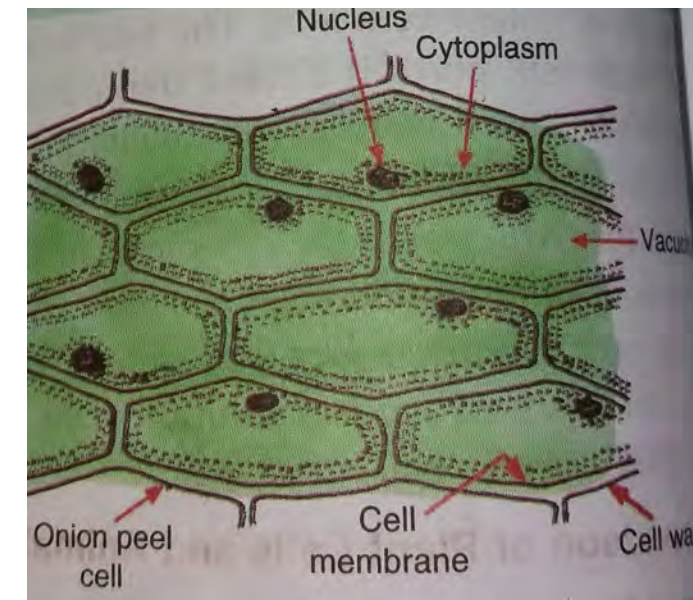
Adaxial-leaf-surface-with-polygonal-shaped-cells-A-Marantodes-pumilum-var-alata-B-M

electron-microscopy-of-a-normal-human-cell-the-cell-membrane-nu abstract-cell-of-vi-rus-or-pathogenic-bacterium-under-micro-scope-biofilm-illustration-2M45157 cleus

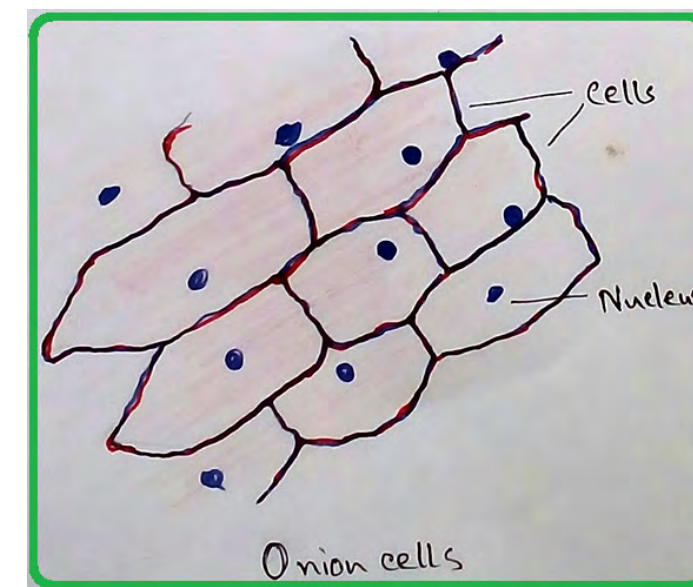


The corneal endothelium is a single layer of endothelial cells on the inner surface of the cornea. It faces the chamber formed between the cornea and the iris.

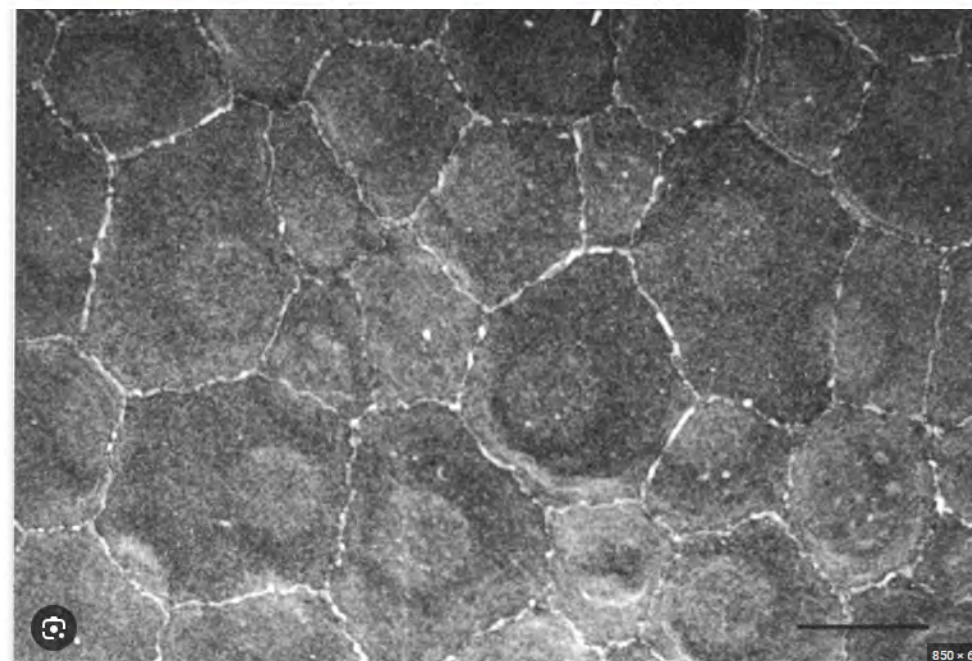
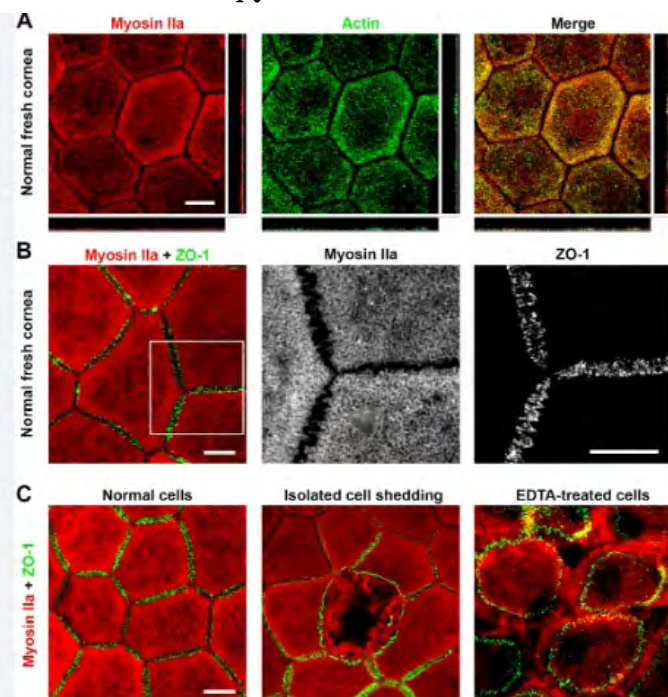
SOURCE - <https://www.mdpi.com/2076-3417/11/2/827>



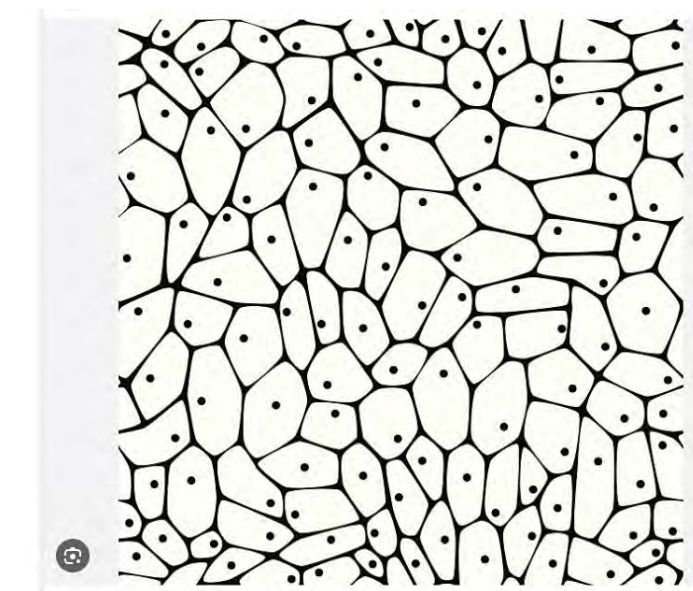
Hexagonal cells of corneal endothelium visualized by specular microscopy.



cells + "nucleus"



A Figure 1 Scanning electron micrographs of the diseased human corneal... | Download Scientific Diagram

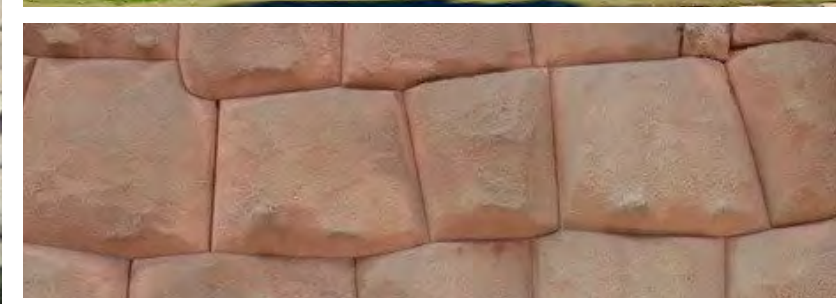
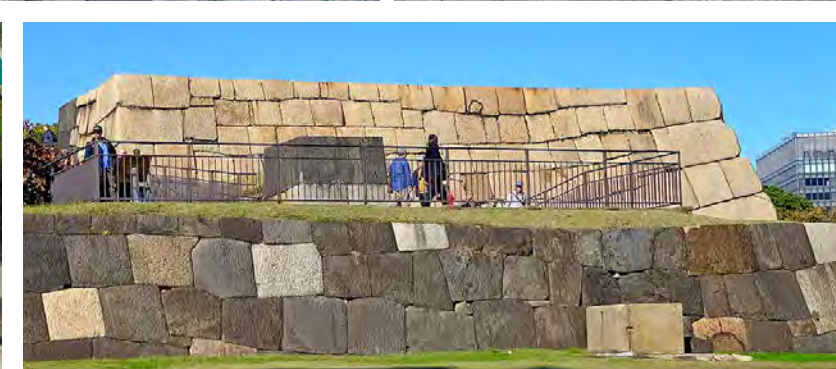
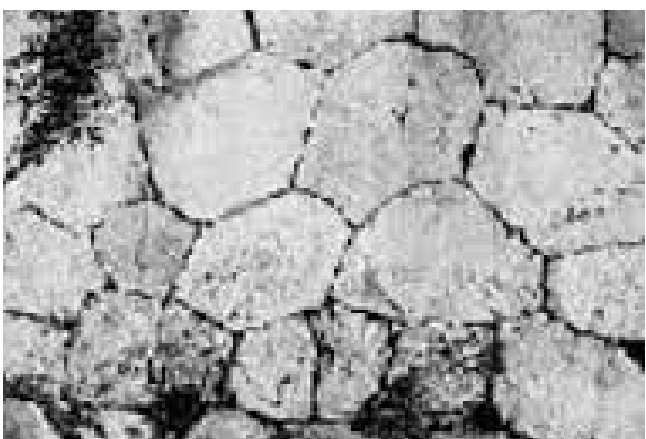
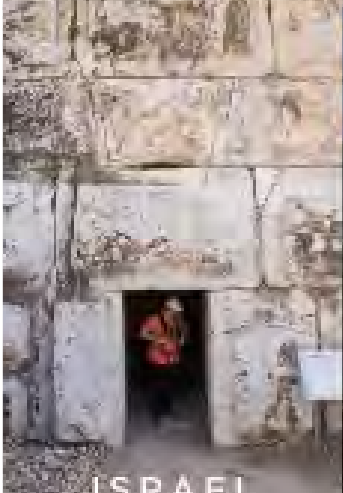
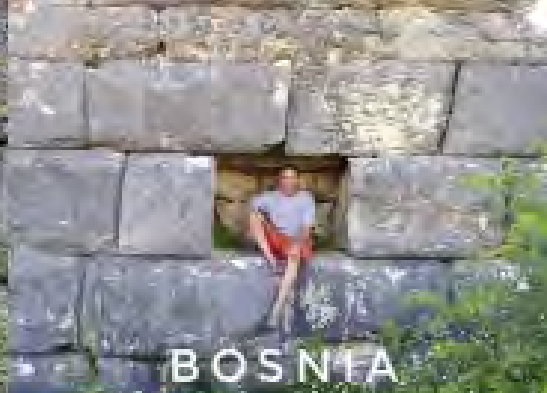
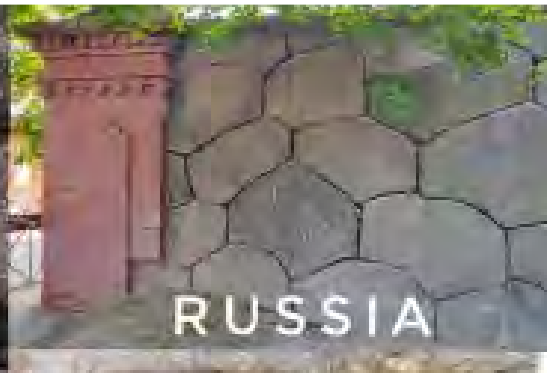
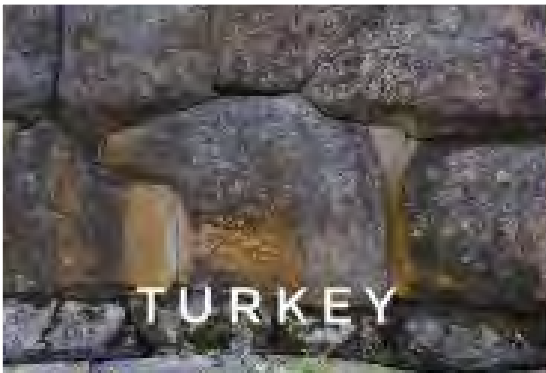


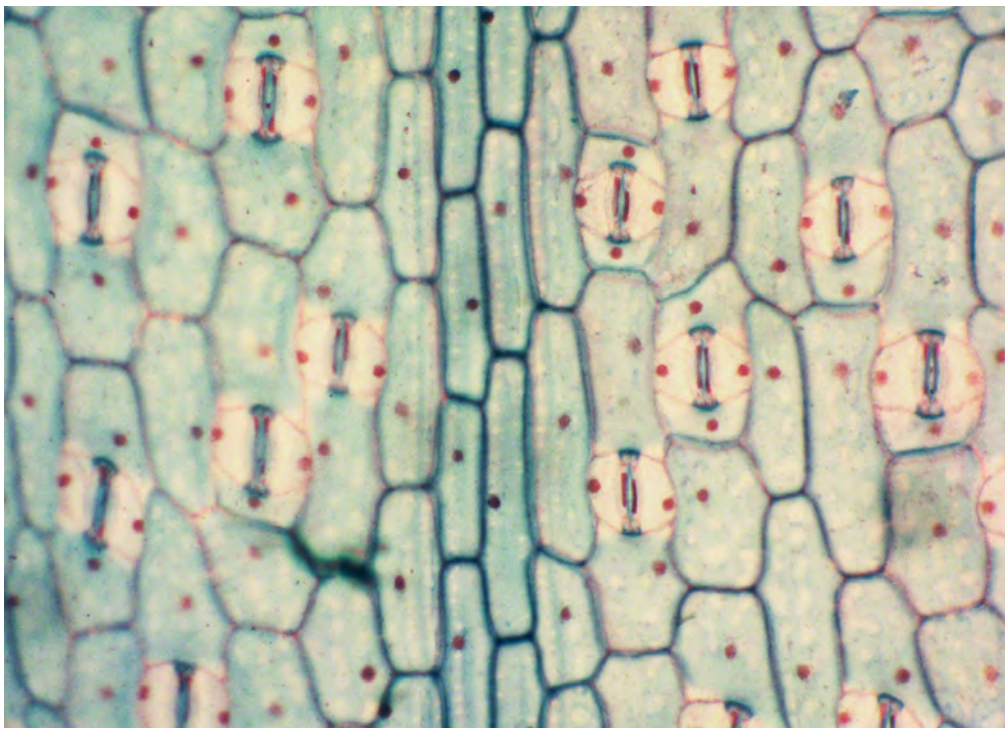
87,200+ Plant Cells Stock Photos, Pictures & Royalty-Free Images - iStock | Microscopic plant cells, Plant cells vector, Plant cells microscope



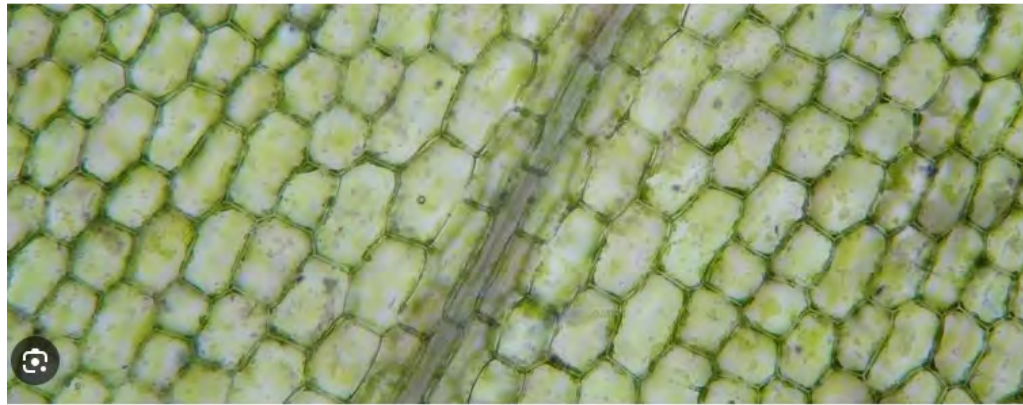
# Megalithic (Polygonal) masonry

## the Power of Nature

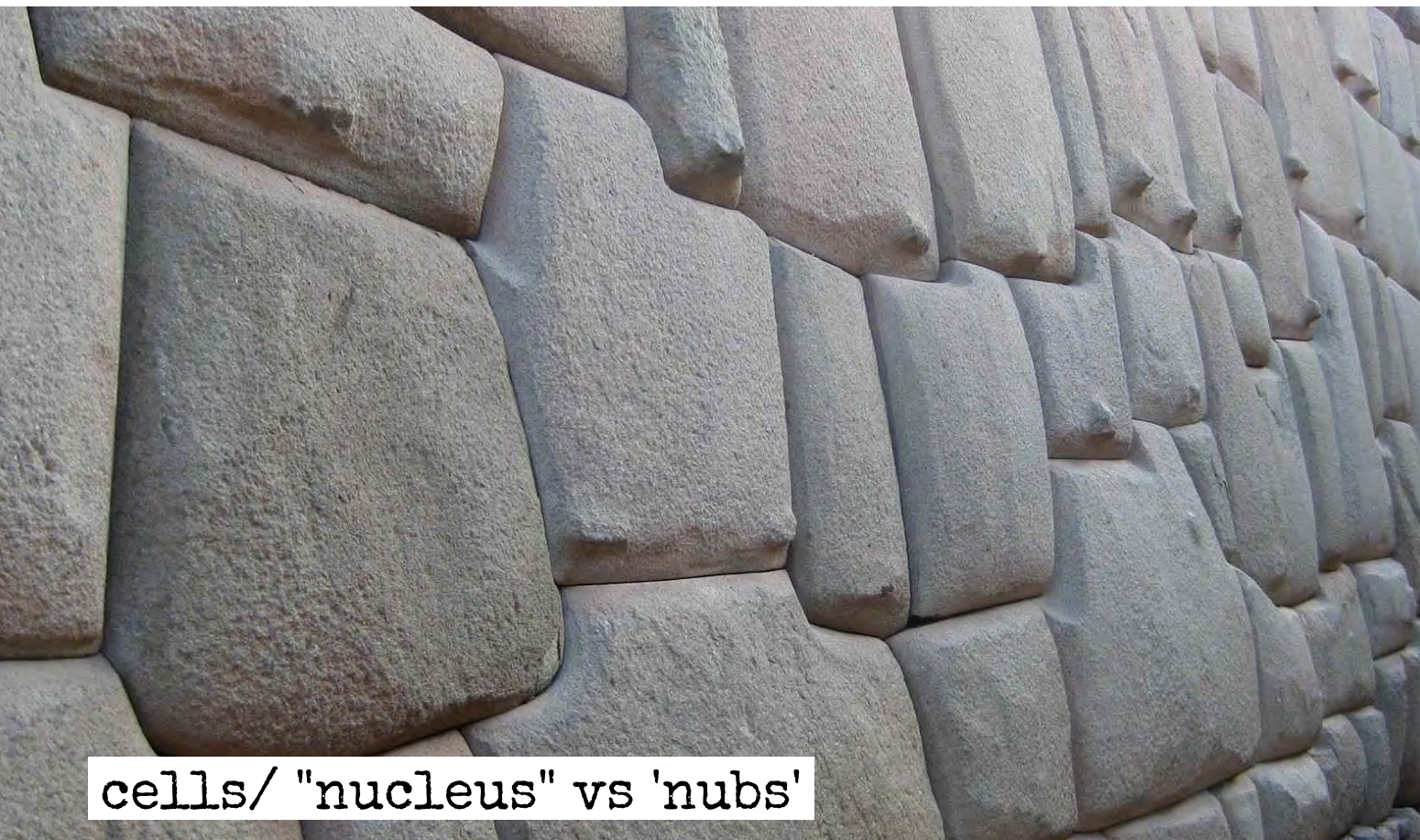




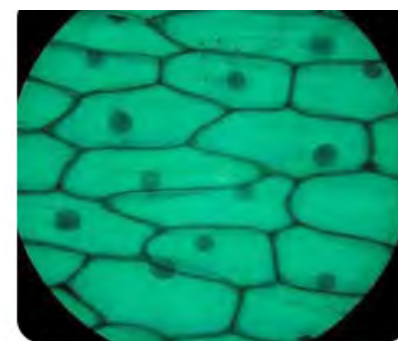
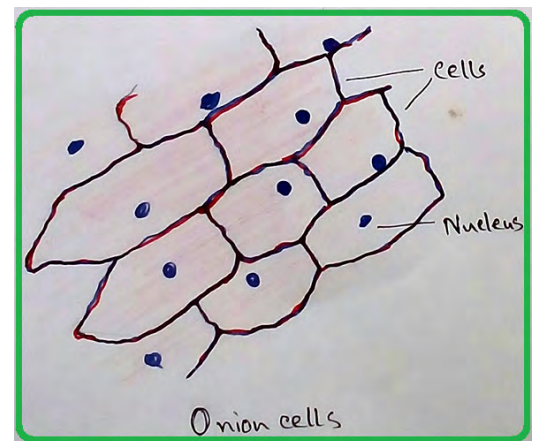
News - University of California, Riverside



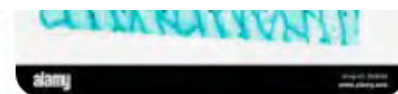
Biologists unravel tangled mystery of plant cell growth | News  
Images may be subject to copyright. Learn More



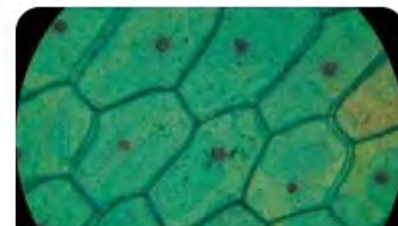
cells/ "nucleus" vs 'nubs'



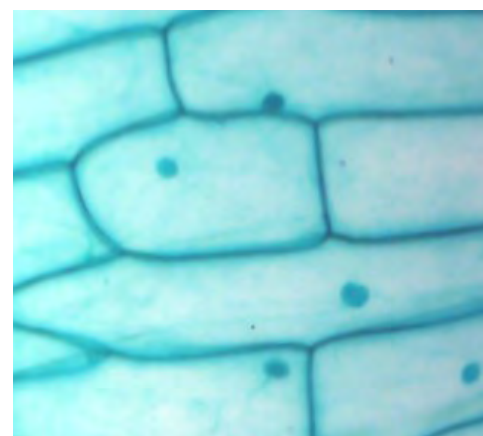
Pinterest  
Plant cell under the micros...

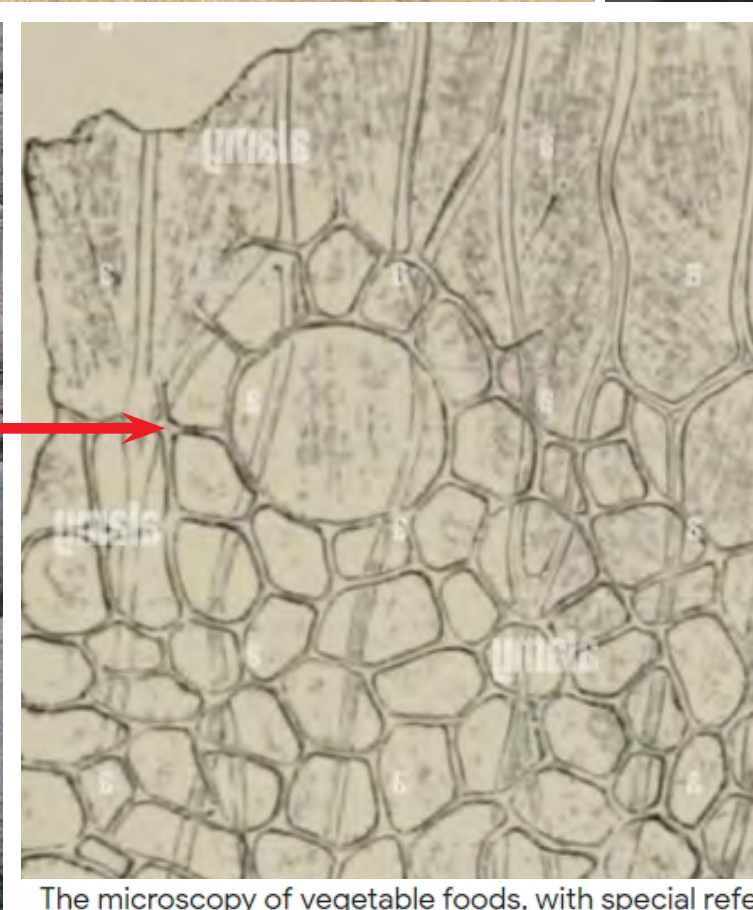
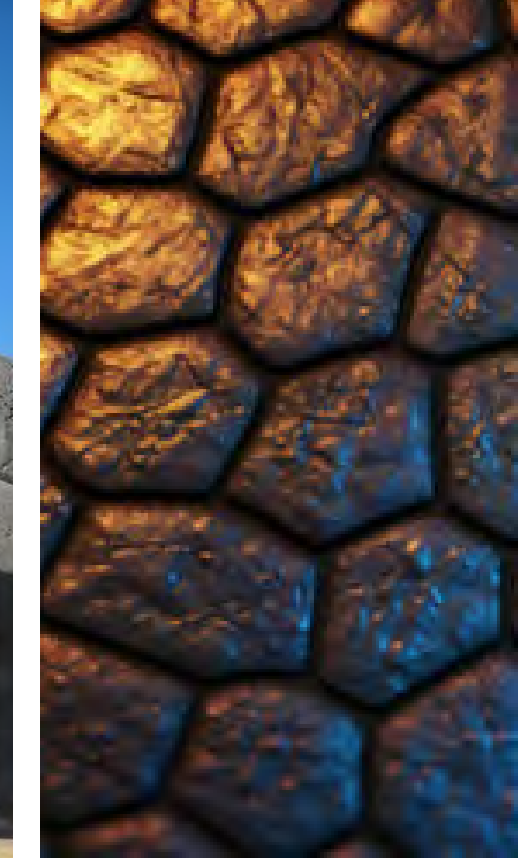
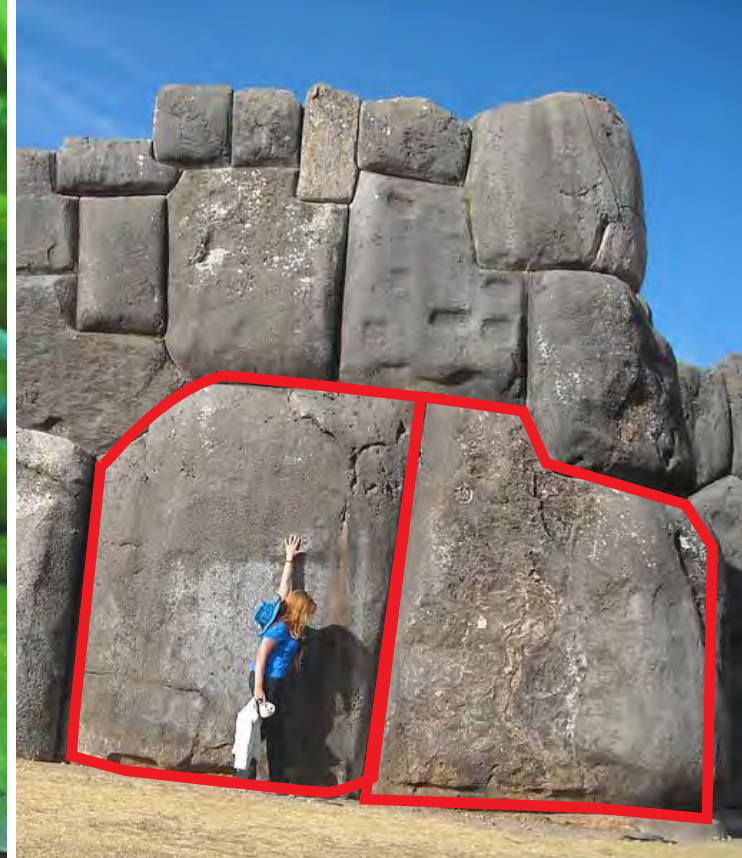
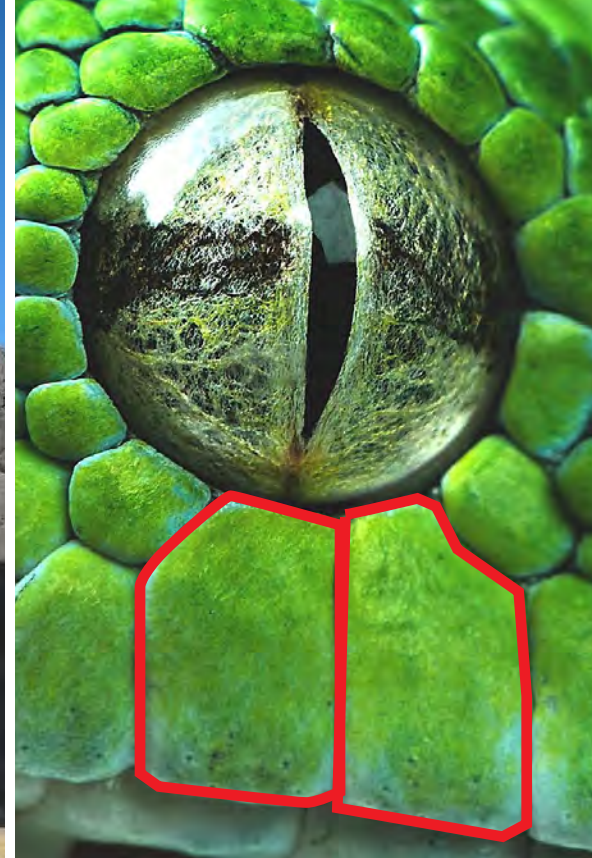


Alamy  
Plant cells microscope hi-r...



Richter Optica  
Richter Optica HS-





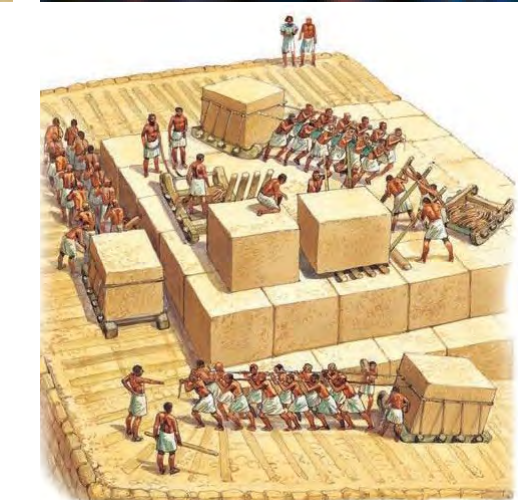
what are the building blocks of the human body

Images Answer Videos News Books Maps Flights Fi

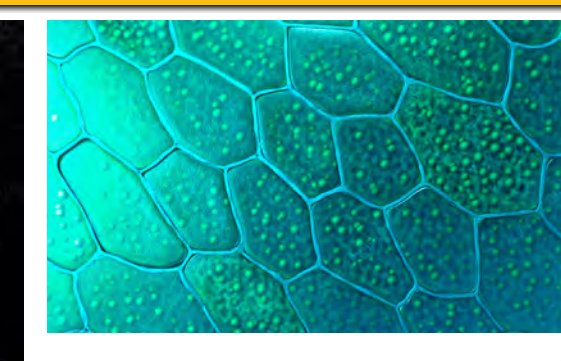
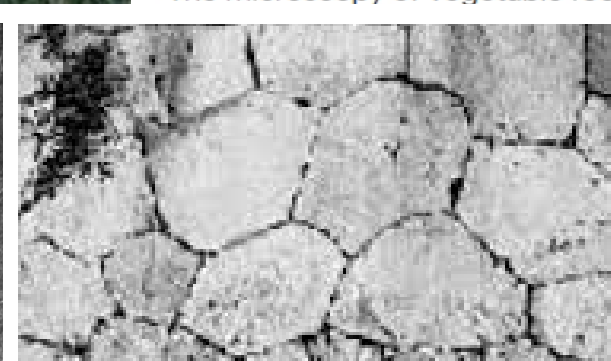
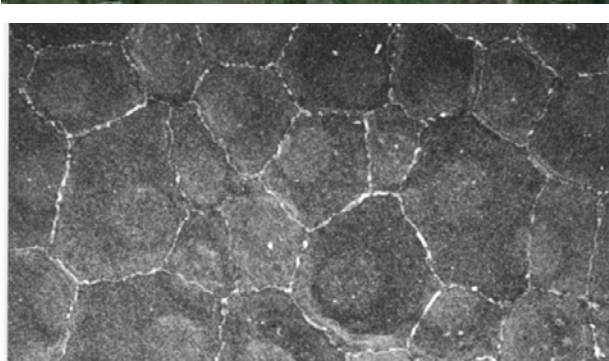
About 137.000.000 results (0,43 seconds)

Every part of your body is made of tiny building blocks called **cells**, which fit together like bricks in a wall. Your body contains more than 200 types of cells that do different jobs.

Cells are literally considered to be the **'building blocks'** of our body...



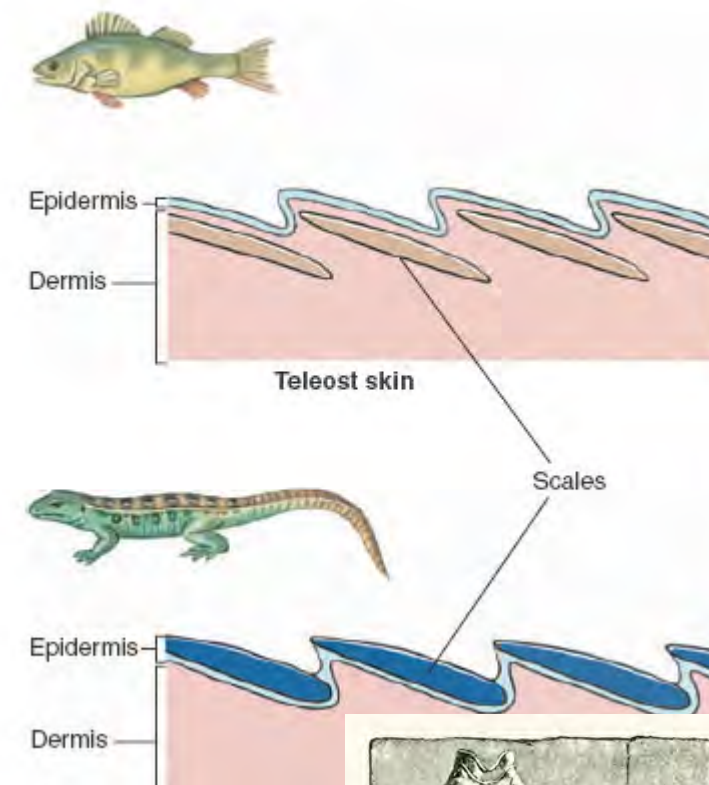
"There still is no straightforward explanation available on how these walls were built. To understand the origins of the shape of the stones, we'd better not underestimate or dismiss the power and working of nature in th epast. This includes the power of the human mind and abilities to achieve what looks like magic to us today. As cells are literally considered to be the 'building blocks' of our body...the concept of cell biology might have a connection or might be a clue to understanding why and how the walls were constructed". JvdL (C4aCS)



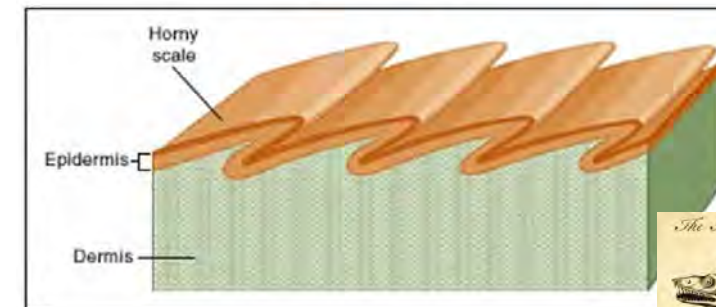
structural anatomy of the human cornea and corneal endothelial cells

'cyclopean' wall, Italy

Challenge for a civilized society • 11



The scales of reptiles are made of keratin produced by the epidermis. Unlike fish scales, they have no dermal bone layer



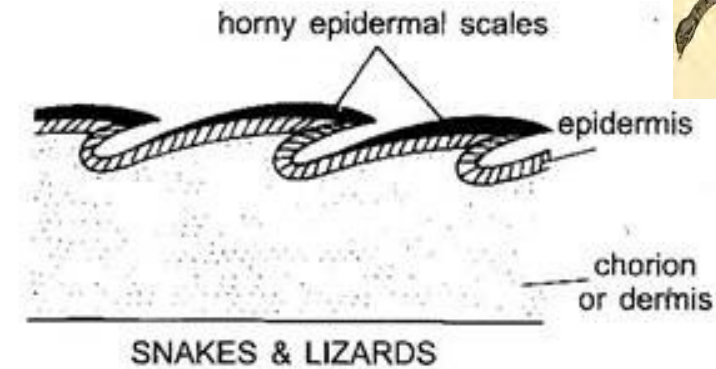
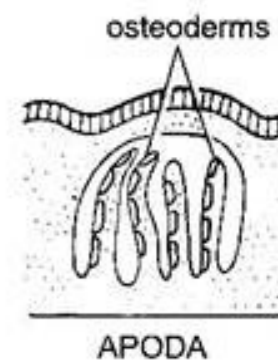
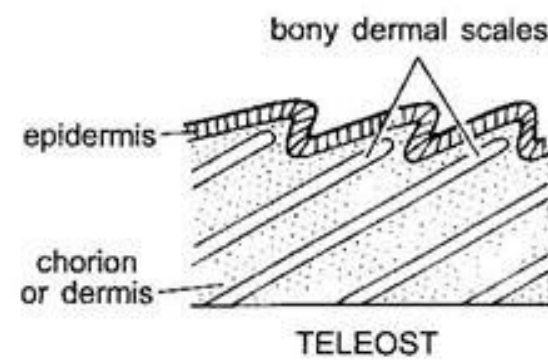
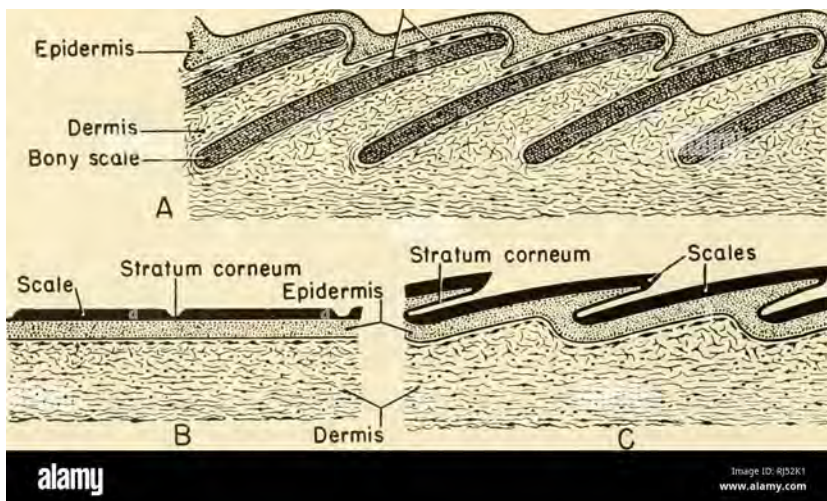
SERPENT SYMBOLISM

"The serpent shows the way to hidden things..."  
-Carl G. Jung

Snakes and serpents can be found used in nearly every ancient culture as symbols for spirit, the divine, enlightenment, and the power of transformation. We still see them in our modern medical symbol, derived from the Rod of Asclepius, and Hermes' Caduceus. Why snakes? Read more at theyeopening.com...



Sacsayhuamán, Peru



# Turkey

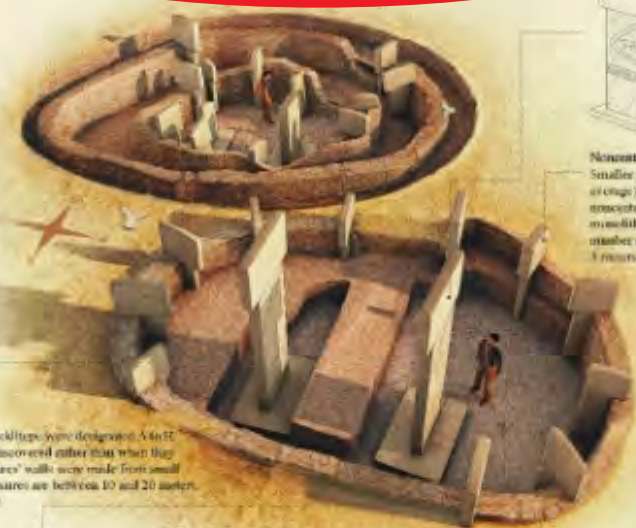


## GÖBEKLİ TEPE World's Oldest (12,000 years old) and Biggest Temple

Excavation area of Göbekli Tepe: Göbekli Tepe, the nomadic people's spiritual center is 1.5 km away from the nearest village, Örencik, and 18 km from the nearest city, Urfa, in southeastern Turkey. Göbekli Tepe's symbol is a T-shaped pillar. The pillars are in the first and second archaeological layers dating to the Pre-Pottery Neolithic Age (9600-8000 BCE). The ritual site on the hill – what is visible of it so far – is nearly 15 meters high. The Göbekli Tepe excavation area contains about 90,000 square meters (larger than 12 football fields). The hill, which protects Stone Age ruins inside, as can be seen from its name (göbekli/bellied), is round-shaped and situated in the highest place on a limestone plateau. Excavations at Göbekli Tepe started under the direction of Klaus Schmidt (1953-2014) and the German Archaeology Institute in 1995 and now are continued by the German Archaeology Institute and the Republic of Turkey Ministry of Culture and Tourism.



**Circular Enclosures:** The circular enclosures at Göbekli Tepe were discovered in 1995 according to when they were discovered rather than when they were built/located. The enclosures' walls were made from animal limestone. Diameter of enclosures are between 10 and 20 meters. The biggest one is enclosure D.



**Noncentral and Smaller Pillars:** Smaller pillars around the central pillars (10-12 on average) are in the surrounding wall. Central and noncentral, all the pillars were cut out of monolithic limestone. The pillars of Göbekli Tepe number more than 100. They are between 1.5 and 3 meters in height.

**Figures on T-shaped Pillars:** T-shaped pillars at Göbekli Tepe are covered by semi-relief animal figures. Birds, serpents, felines, boars, and stags are the most depicted figures. A gazelle and a wild ass are among the animals most rarely depicted. In addition to the animal figures, there are some symbols in the form of an 11-pointed star, a cross, a ring, and some lines, which express constellations.



Göbekli Tepe - World History Encyclopedia

Get this image on: World History Encyclopedia | License details

3,257 × 2,421  
Visit

Turkey, Zernaki Tepe...old...



## Turkey, Zernaki Tepe

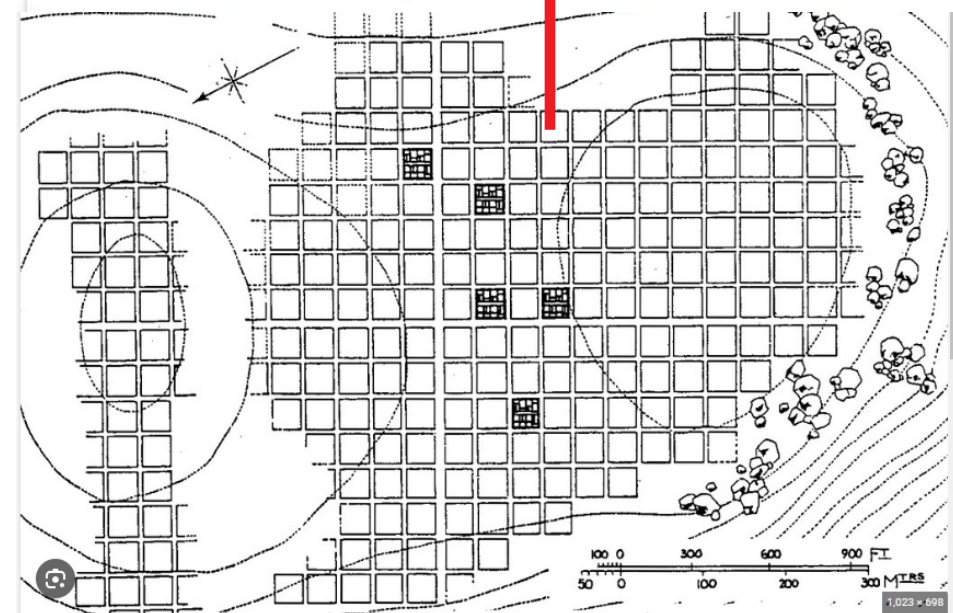
Stone-joint clamps have been found **globally** stretching from South America all the way to the Far East, covering a long span of time.

Despite their global presence and continuous reports on new findings, the subject has not received serious scholarly attention.



Van'daki ızgara planlı antik kentte kazı çalışmaları başlatıldı

Images may be subject to copyright. [Learn More](#)



QA586 - The grid-plan of the Urartian town of Zernaki Tepe... | Flickr

Get this image on: [Flickr](#) | [License details](#)  
Creator: Marten Kullman



Bolivia, The Kalasasaya



China





1. Trilobate arrowheads found around the fortification wall at Ayanis; 2. Fine masonry of the fortification wall, southern face, Ayanis.



Cavustepe

Turkey, Zernaki Tepe



Ani



Ani Cathedral



Ruins of Ani – Ancient Armenian Capital, now situated in Turkey’s province of Kars. – Wonders of the Past 🌟 - Quora



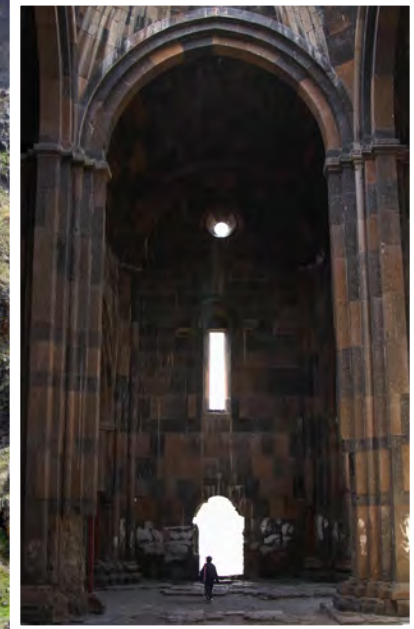
Rethinking The Future - Architecture Awards



in Time: Ani, Turkey - RTF | Rethinking The Future



File:20110419 Kizkale church Ani Turkey.jpg - Wikimedia Co  
Get this image on: [Wikimedia Commons](#) | License details  
Creator: (georgios.giannopoulos at gmail.com)  
Copyright: 2011 by Georgios Giannopoulos  
Want to know where this information comes from? [Learn more](#)



# Turkey, Ani



# New Discovery of a Second Urartian Temple Built by King Menua Reveals Armenian Continuity

ADMIN / DECEMBER 23, 2022 / LEAVE A COMMENT / 2792 VIEWS



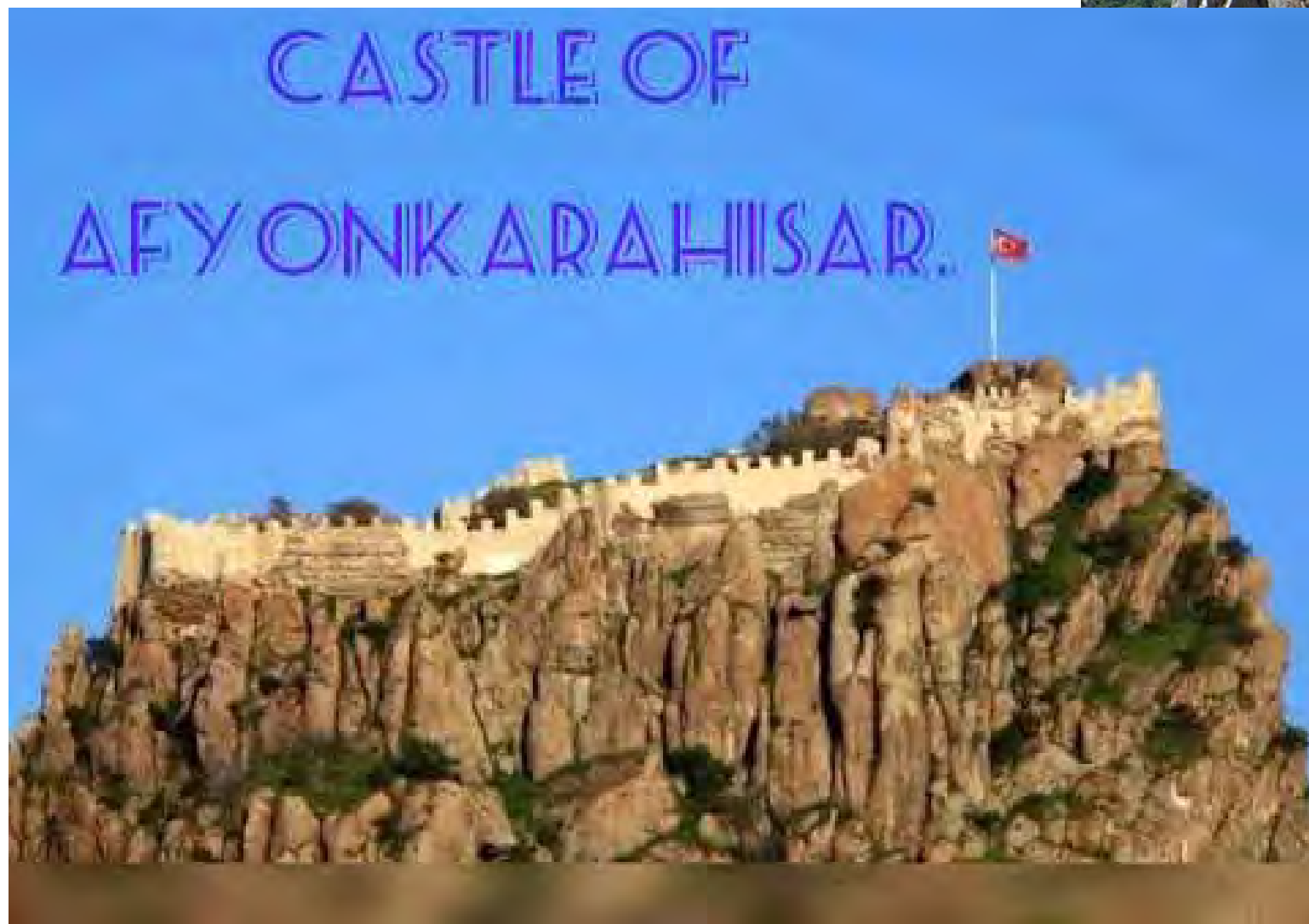
Van Fortress

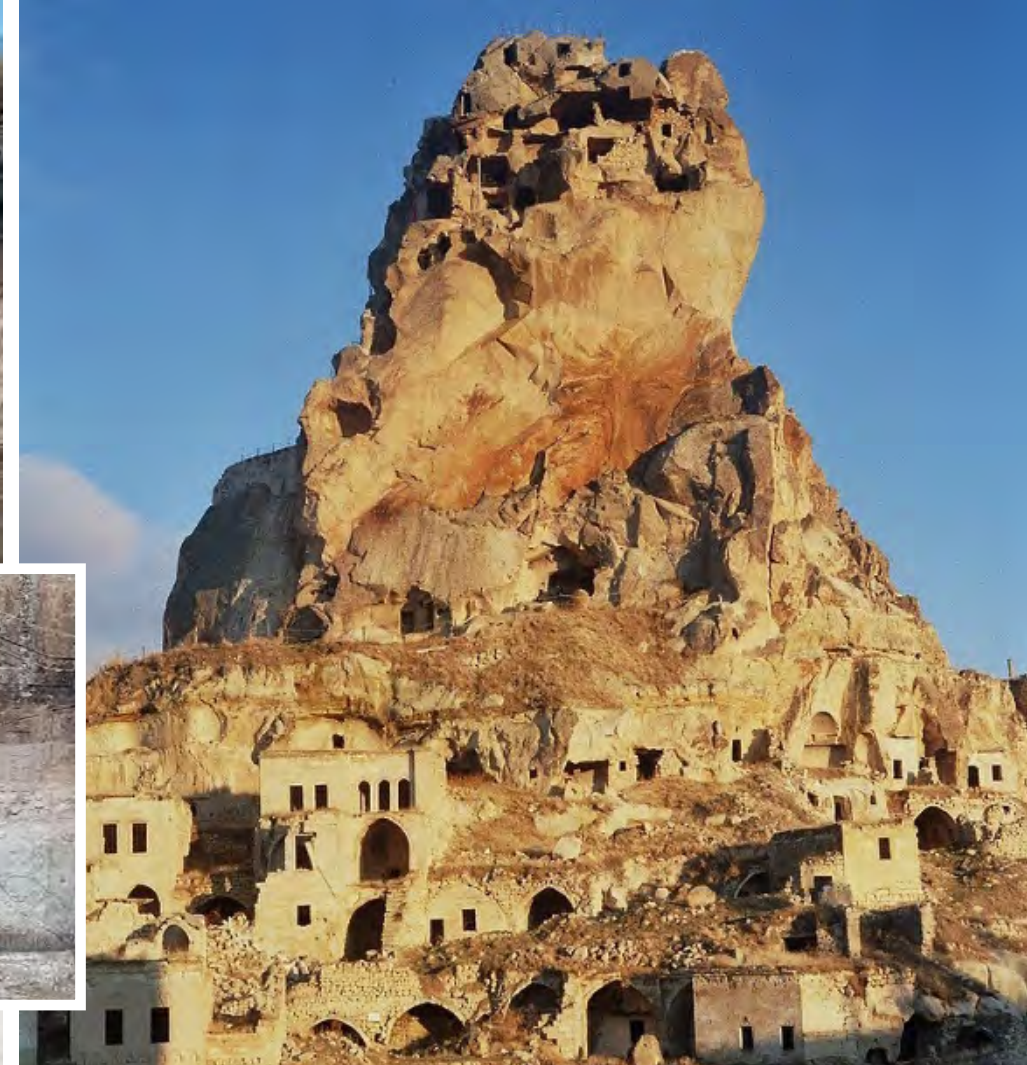


Uchisar

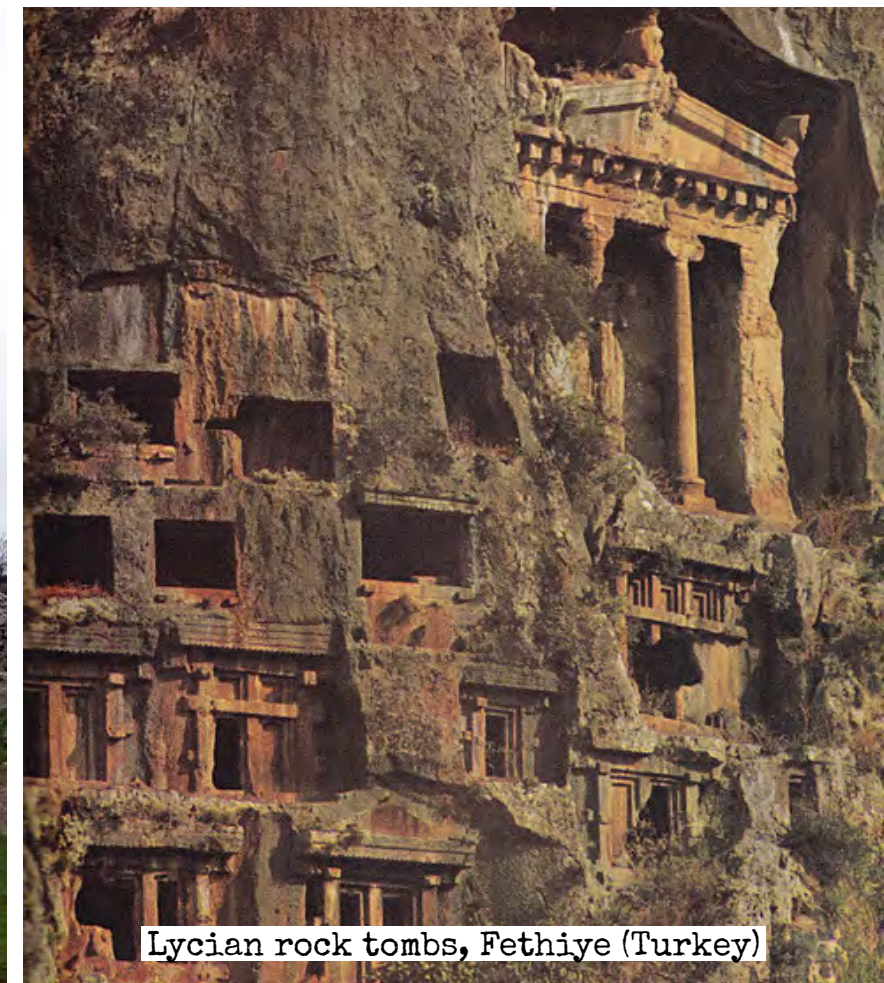


turkey-east-anatolia-guezelsu-hosap-castle





Phrygian Valley in the İhsaniye district of Afyonkarahisar, Turkey

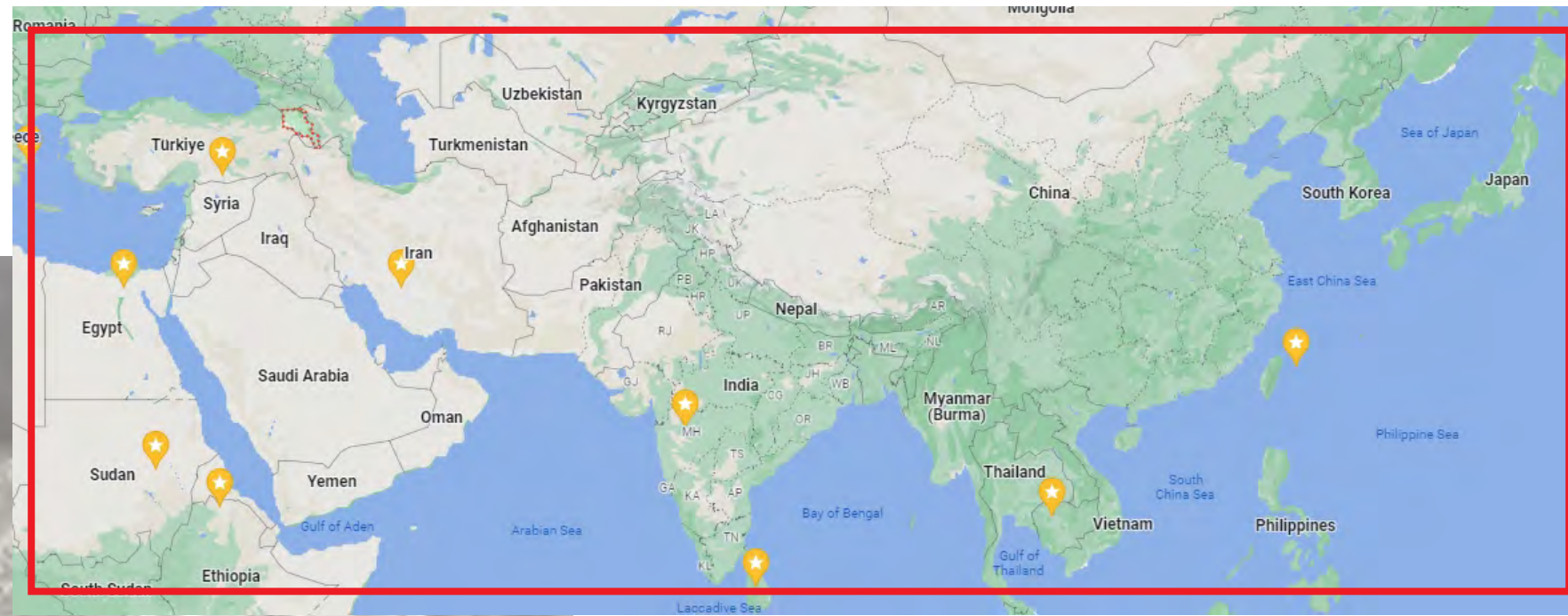


Lycian rock tombs, Fethiye (Turkey)

# Southeastern Europe/western Asia +



Armenia



Arevik National Park, Armenia



more and this site will probably be regarded as a perfectly natural place.

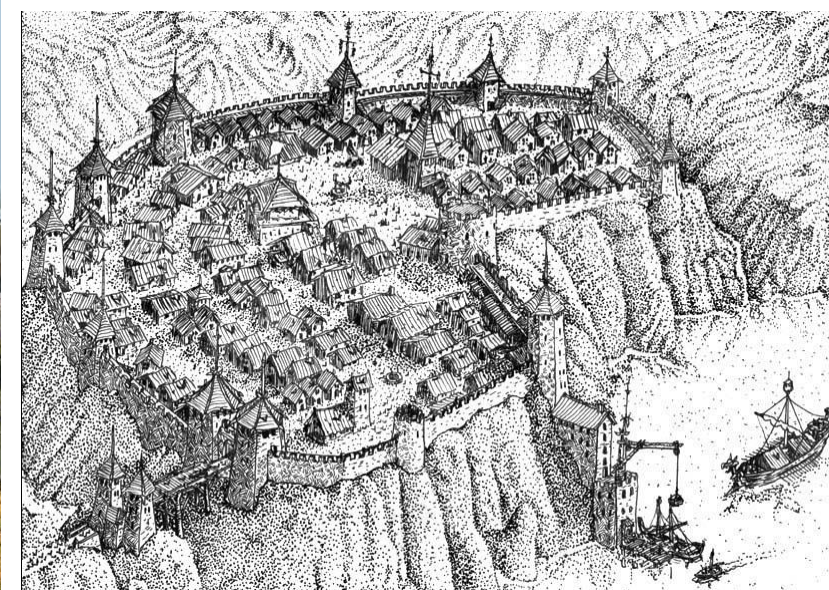
Ancient Gaochang City (Kocho, Kharakhoja or "King City") is the site of an ancient oasis city built on the northern rim of the Taklamakan Desert in Xinjiang, China.

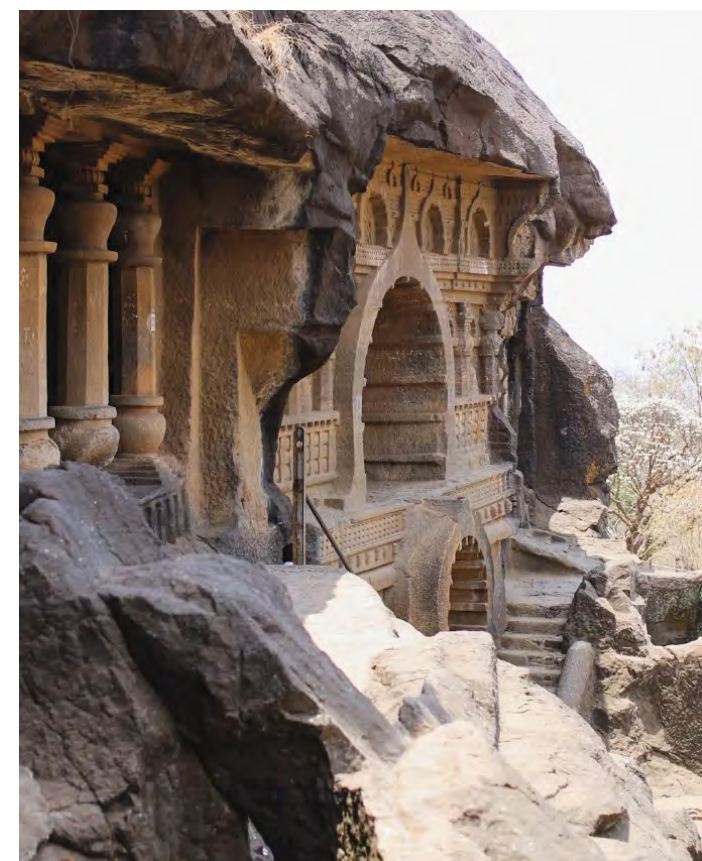
The city was built in the 1st century



The Subax Buddhist Temple in Kuqa county of Northwest China's Xinjiang Uygur

### Warangal





India  
• Vijaya Mandir (Bija Mandal)  
• Bija Mandal, Vidisha  
• Warangal, Telangana  
+ more

Warangal

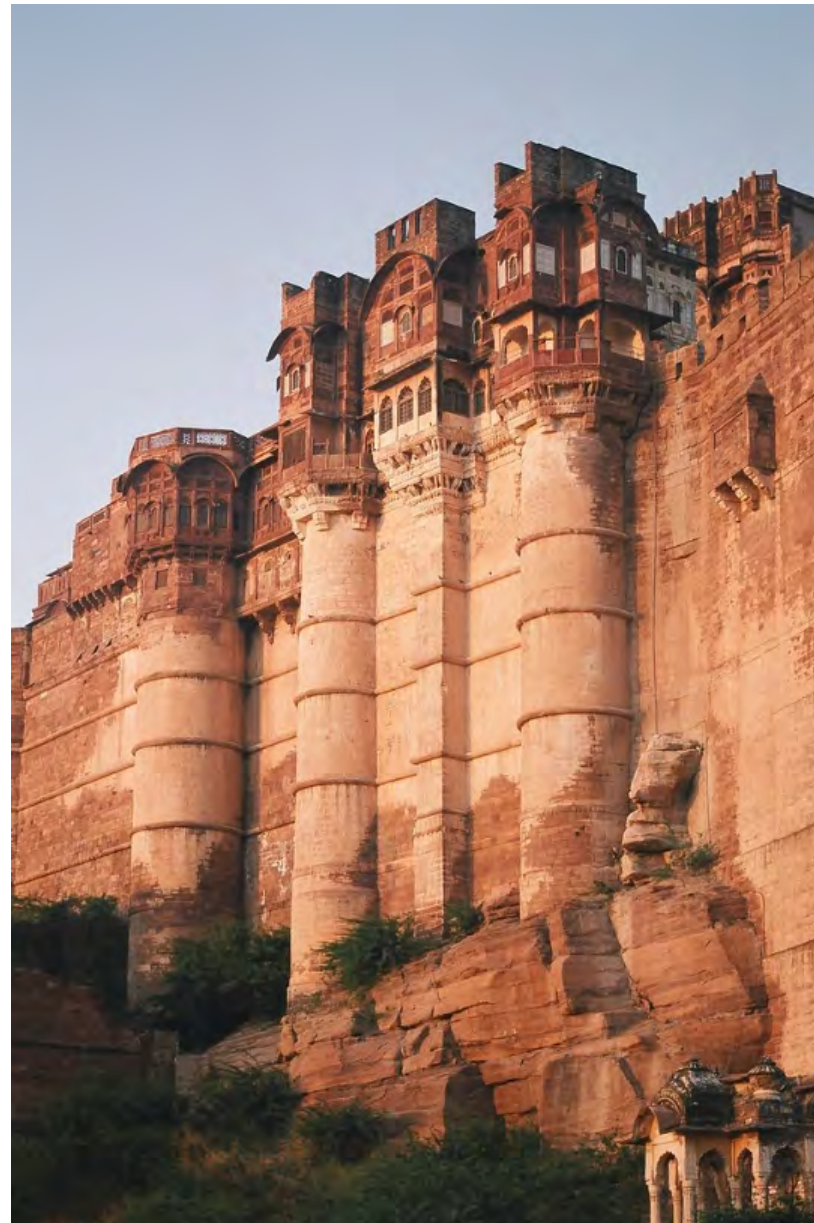


Brihadishvara, Thanjavur, Tamil Nadu, India

इतिहास की किताबों में लिखे झूठ पर हमारे मंदिरों के पत्थरों पर लिखा सच भारी पड़ रहा है ..



Bhongir-Bhuvanagiri-District, India



The Mehrangarh Fort, Jodhpur, Rajasthan, India

नगढ़ दुर्ग (जोधपुर)







Somewhere in Na Haeo, Loei, Thailand



Candi Kalasan,  
Java, Indonesia



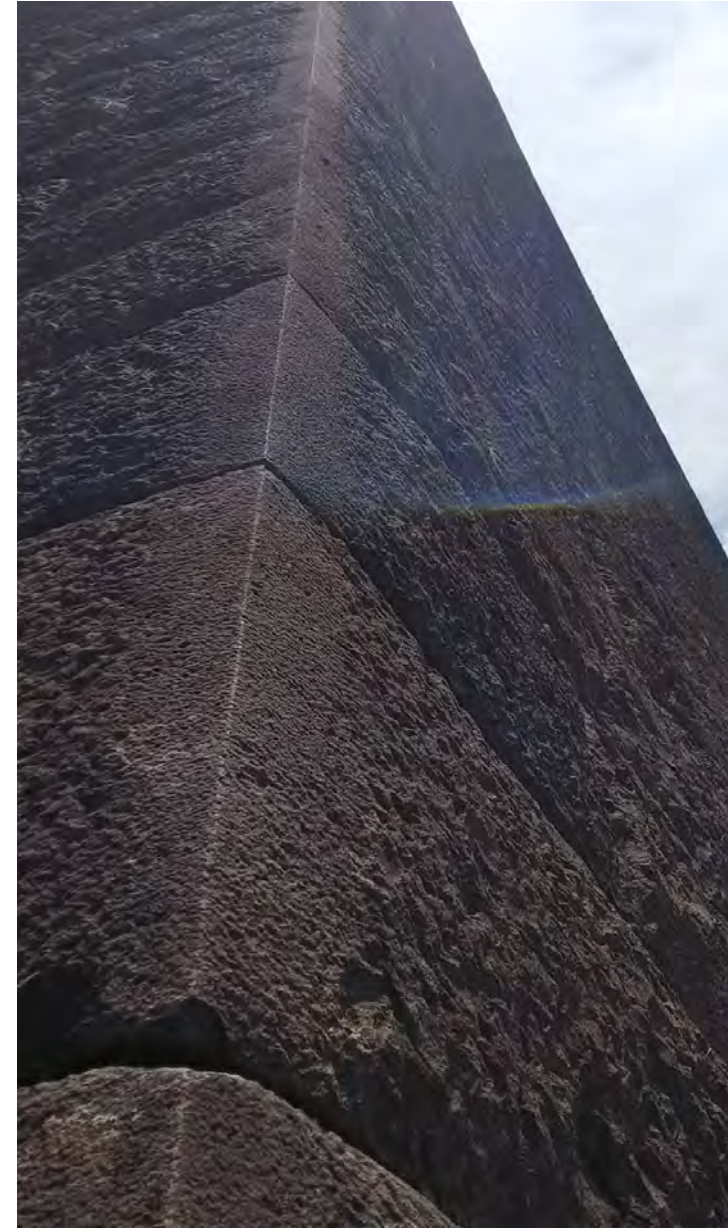
The Royal Kurgan of Kerch in  
eastern Crimea



Jirwan Mosul near the town of Alqosh, Iraq



Tomb of Lihyan  
son of Kuza, Ma-  
dain Saleh, Sau-  
di Arabia



Sendai Castle Wall,  
Miyagi, Japan

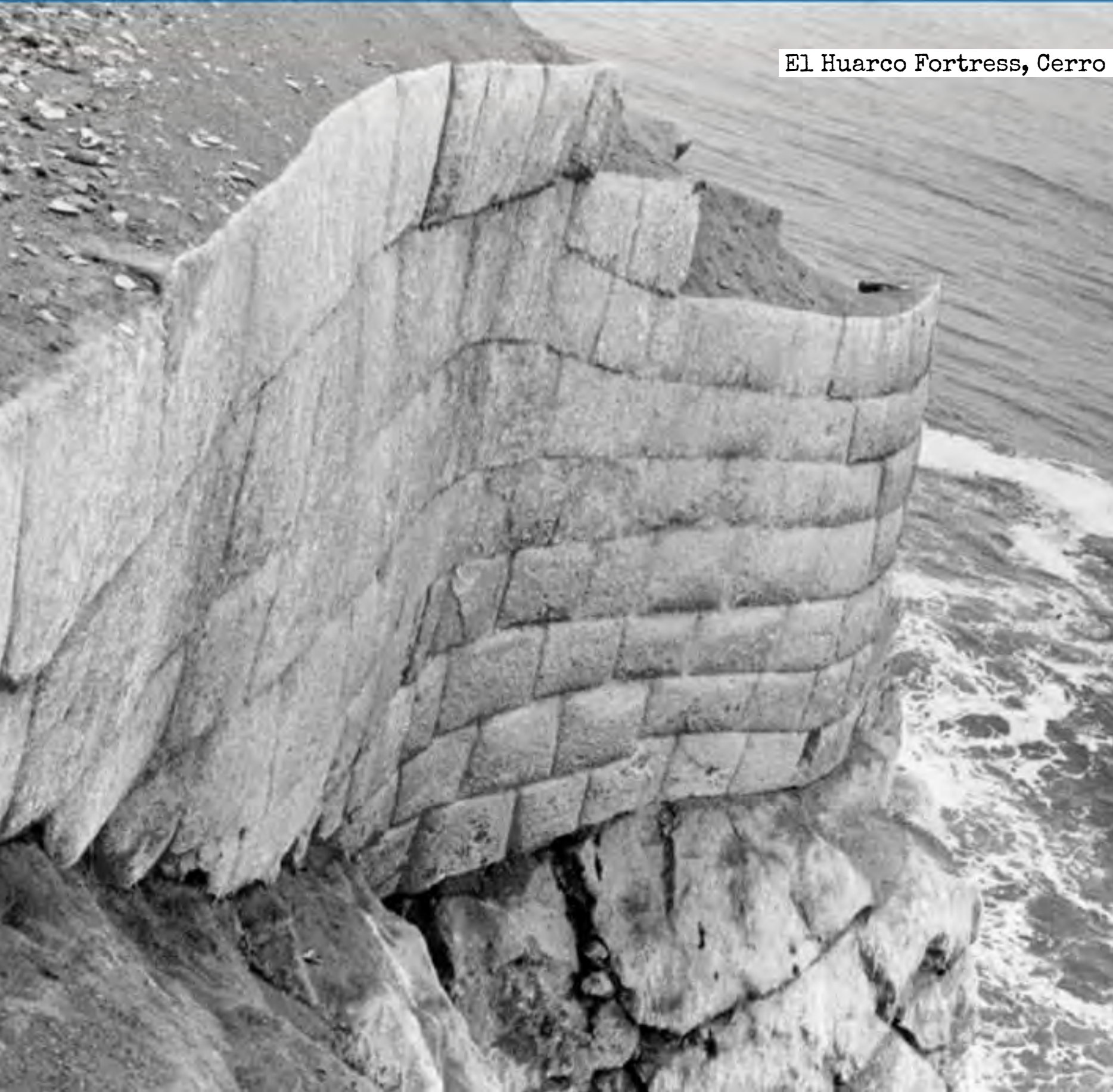
# Photo's & images @ Random



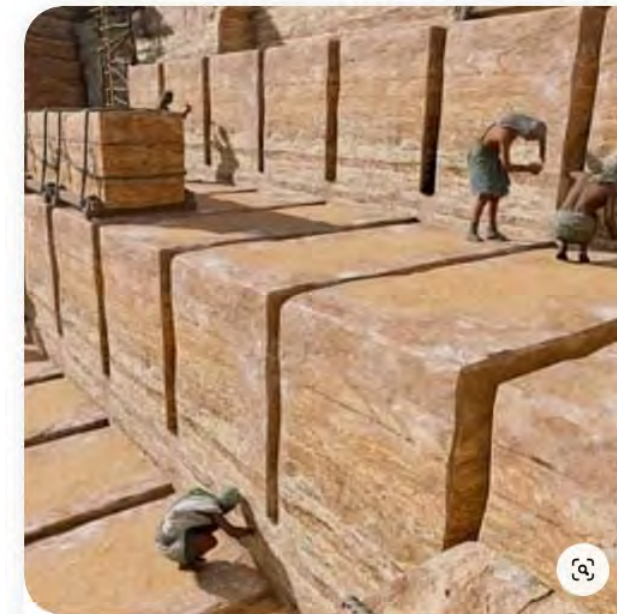
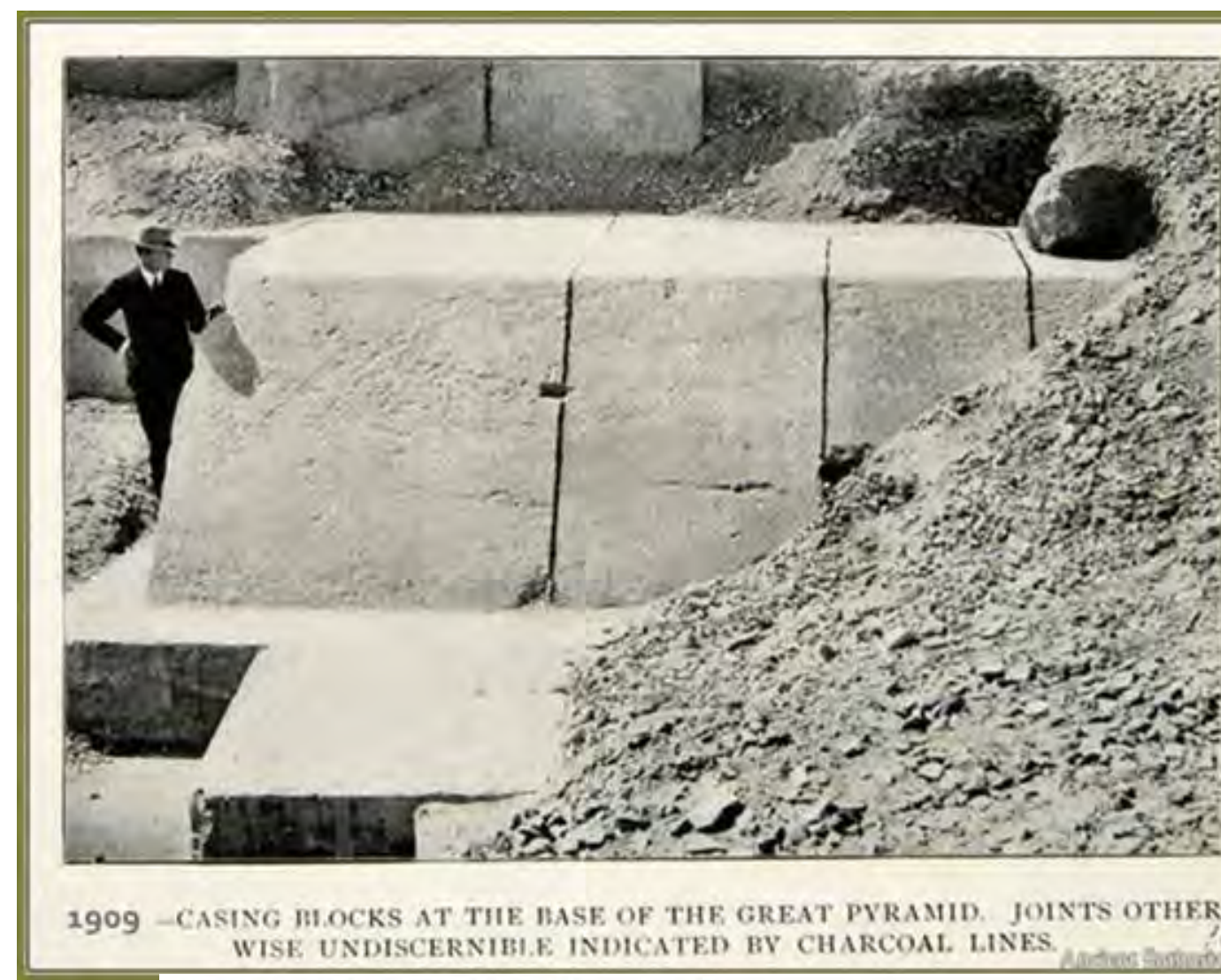
One of the largest andesite blocks at Puma Punku



El Huarco Fortress, Cerro Azul, Peru







historicaleve.com

### Day in the life of the Pyramid builders in ancient Egypt

"The grave of the pyramid builders was discovered by a tourist in 1990". Workers with specialist skills lived nearby, while migrant labourers worked month long shifts...

History 36k volgers

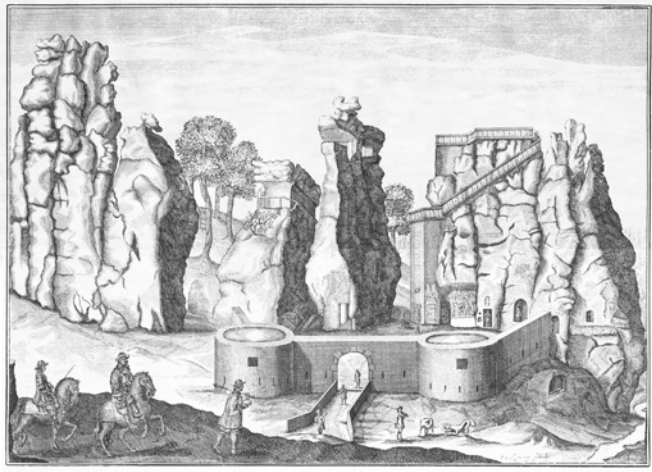
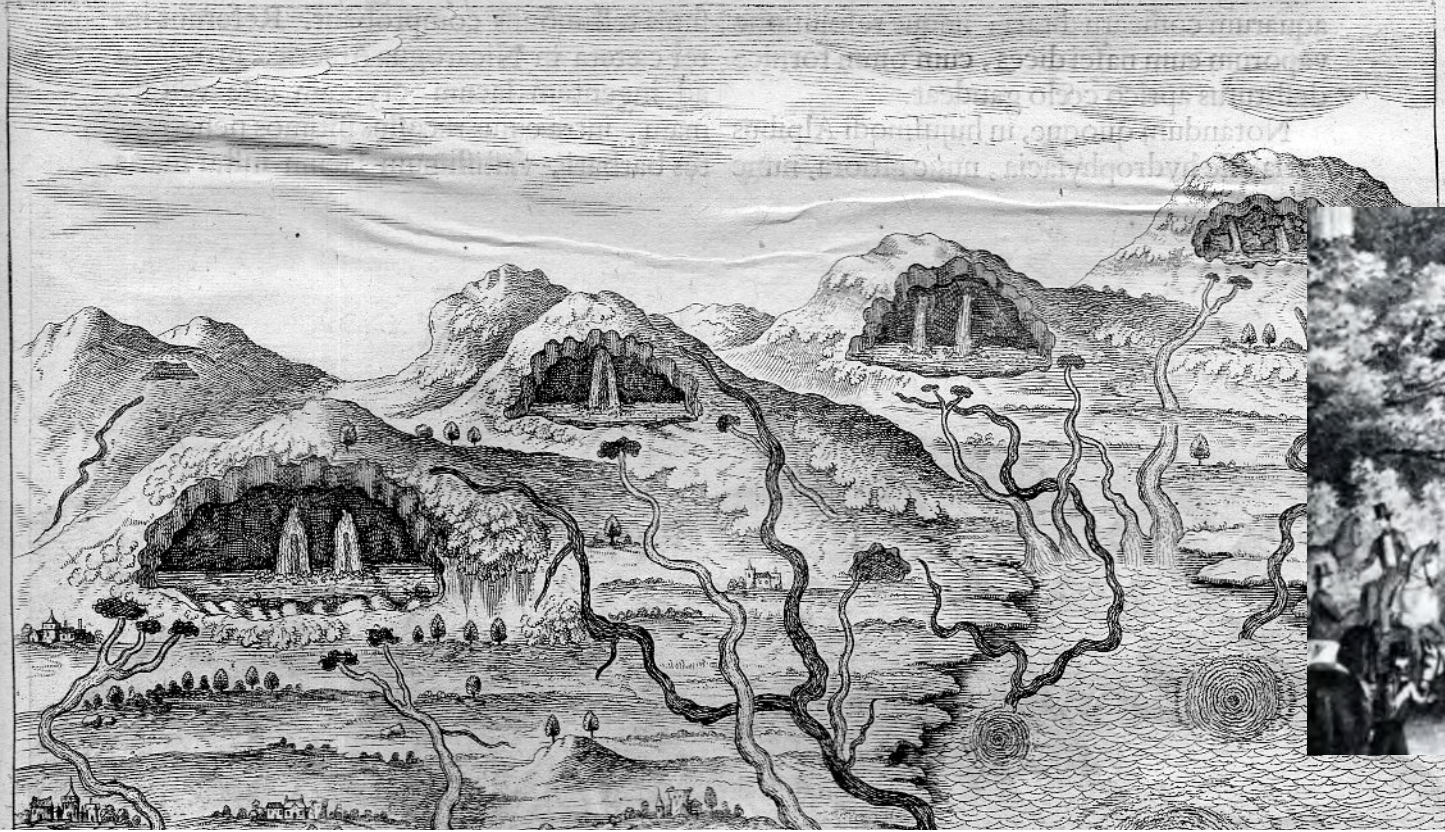
Reacties

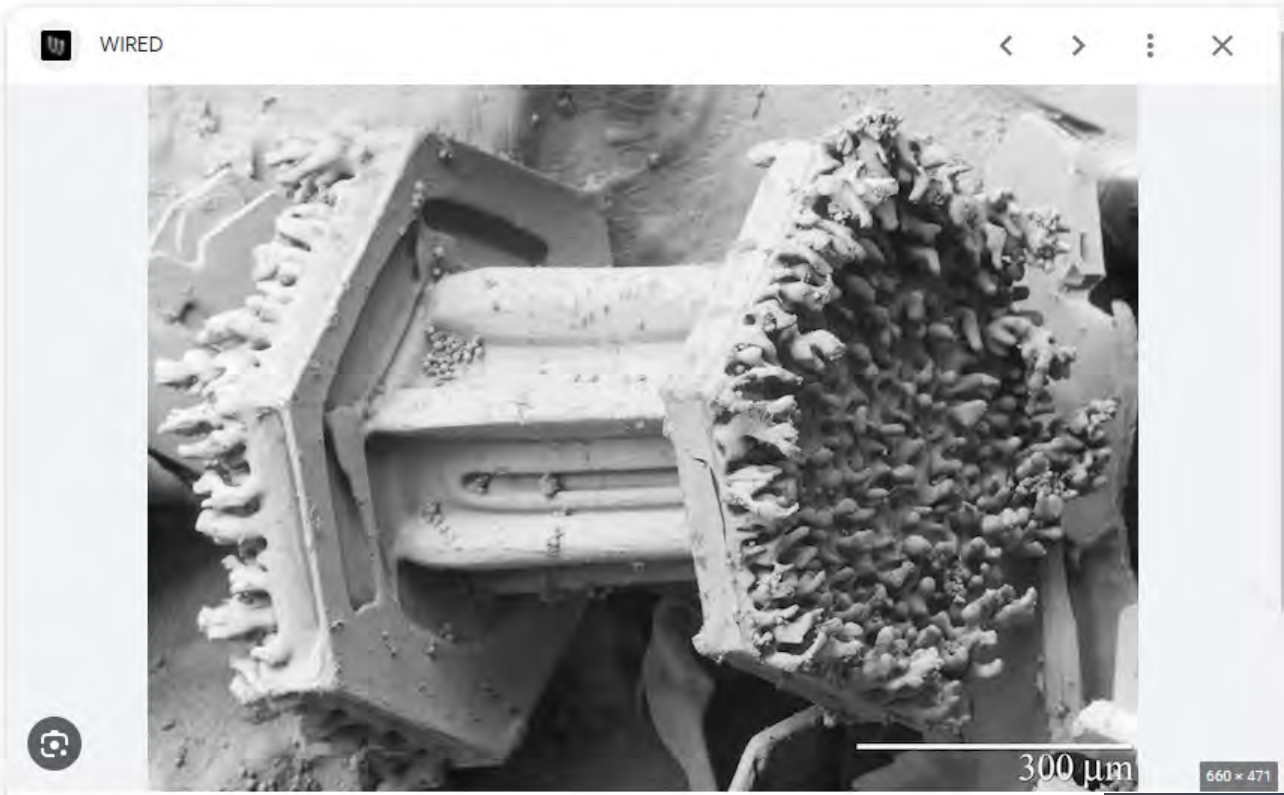
John There has never been a single tool found in Egypt from antiquity that could cut limestone and granite. The precision and weight of these blocks are staggering and the ancient Egyptians simply did not have the tools or technology to do this. The amount of sand these structures were buried under when they were rediscovered, tells of a time when they were submerged under water.

2 reacties

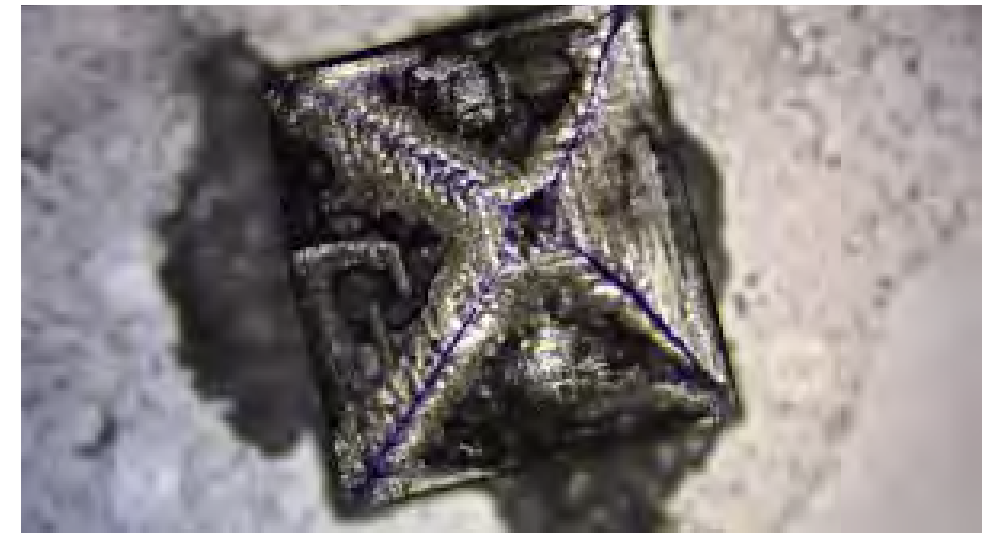
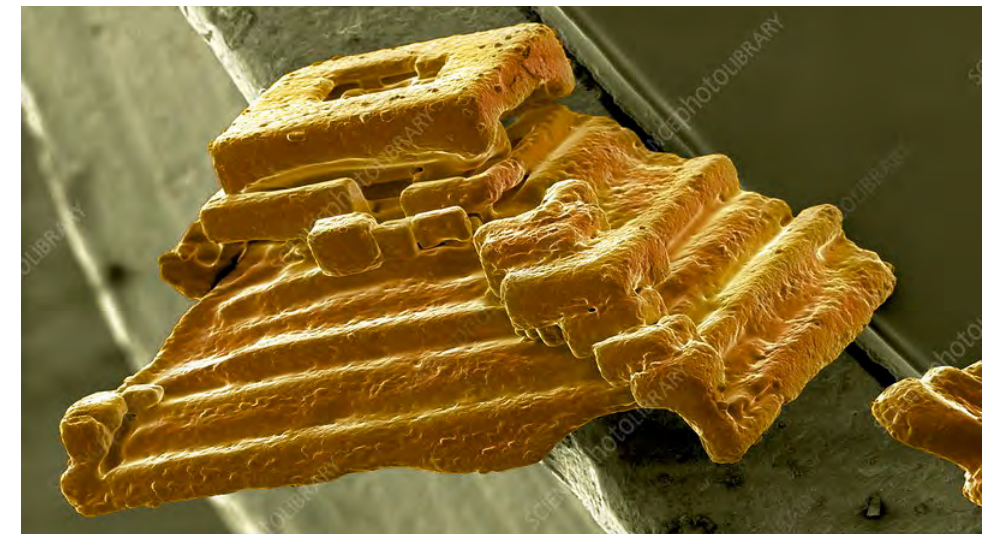
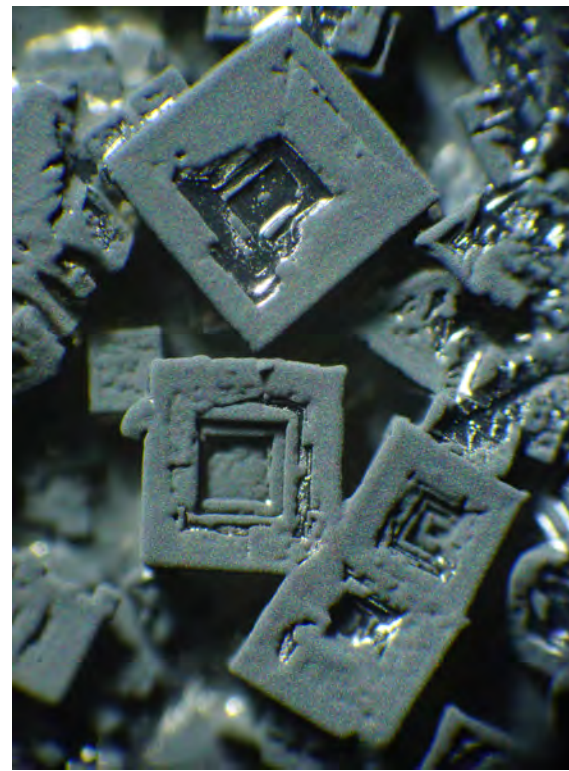


Tertio de Hydrophylacis montium diximus; & inueniet, quod ficuti in Alpibus, ita in omnibus aliis vastissimorum montium cate-  
 no, quotidie per subterraneos meatus re-  
 pleantur; quod quomodo fiat, ostendo.  
 Sint vel unum, vel plura Hydrophylacia

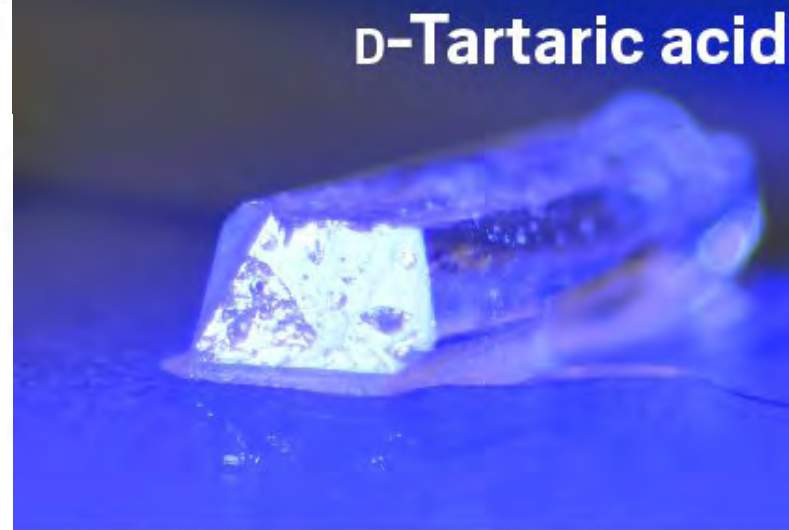




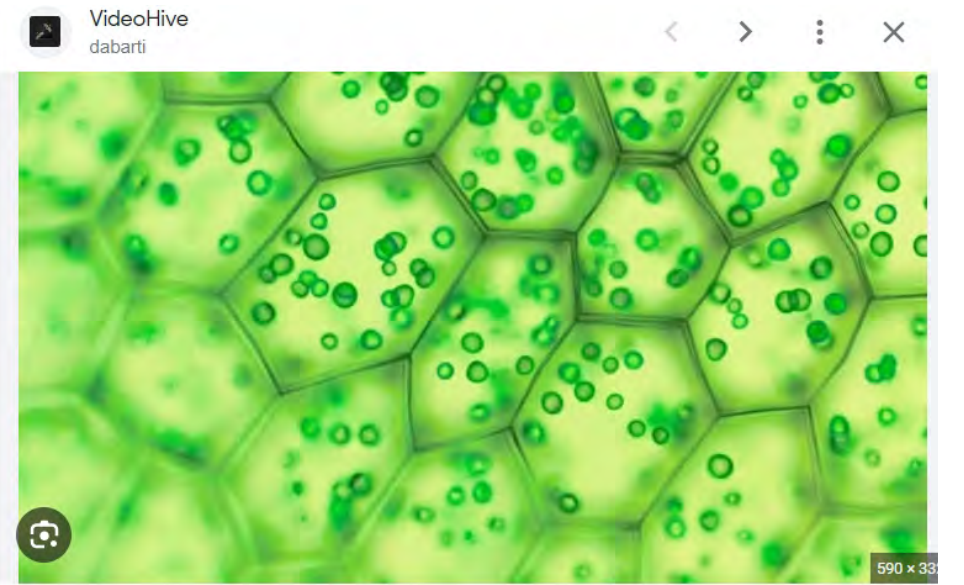
Snowflakes Under an Electron Microscope | WIRED



D-Tartaric acid



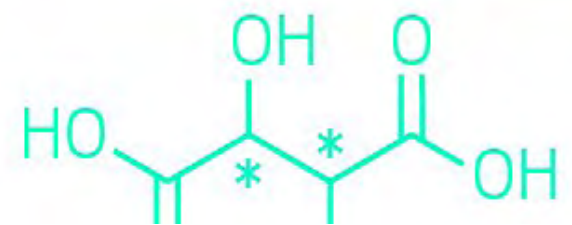
L-Tartaric acid



Generic green plant cells under a microscope. Seamless looping animation.

Watch

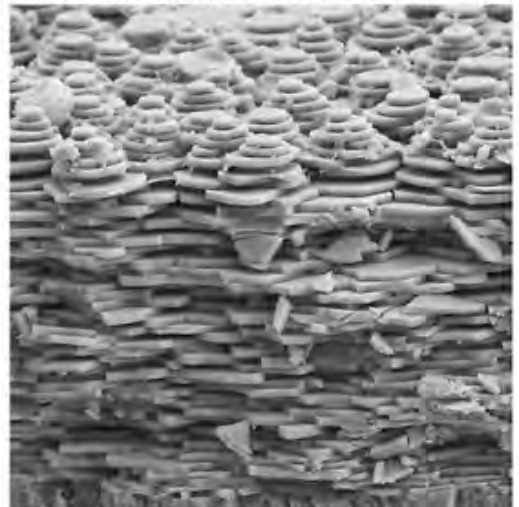
Uploaded: Apr 30, 2021  
 Plant cell structures under a microscope. Green Chlorophyll concentrated in chloroplasts inside cells. Generic plant cells magnification. Seamless looping animation. 4k HD



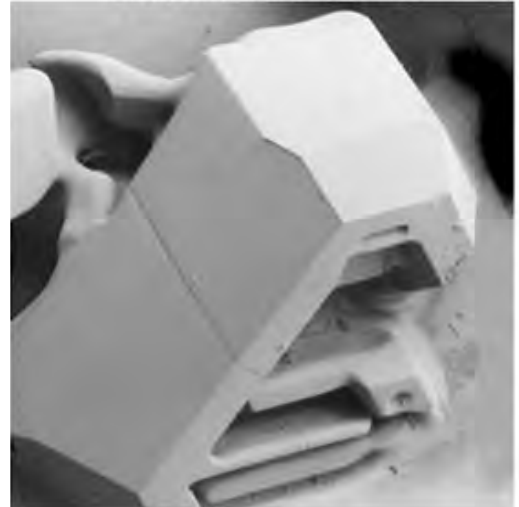
SNOWFLAKE



SNAIL SHELL



SNOWFLAKE



SALT GRAIN







Africa

# FIGURE D'UN ANTHROPOPH.

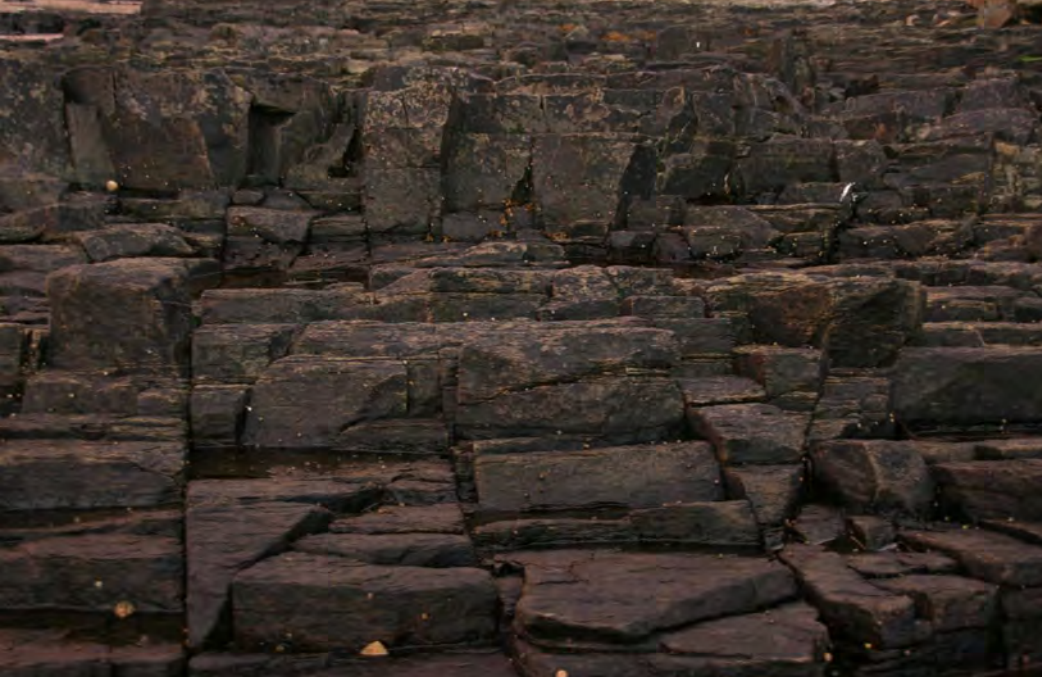
QUI A ESTE PRIS A UNE SORTIE DE LIMERICK.

D E buiten gemeene geitaltenisse van dees Man, die meer van de gedaante van een kameel als van die van een mensch heeft, is oorzaak geweest, dat een Engelsche Ambassadeur op sijn vutrek van Constantinopelen defolte niet boven 12 jaar oud zijnde gekocht heeft; doch gemelde Ambassadeur door eenig onweer in Ierland gedreven zijnde, zo vond dees voor-noemde Menscheneeter, geleentheid om gesachte Excellentie te ontsiappen, en hield zich zelve een wijle tijds verborgen, waar na hy zich te Limerick ter woon begaf, en met een Dochter van Dublin aldaar een Houwelijk aanging, waar by hy verscheide kinderen teelde, daar hem geen van overig is gebleeven, als dees, wien



## THE EXACT EFFIGIES OF A Monstrous Tartar TAKEN IN HUNGARY By the Valour of the Noble COUNT SERINI. February, 1664.





petrified...



Weathered granodiorite dikes with my dog for scale, and a big feldspar crystal

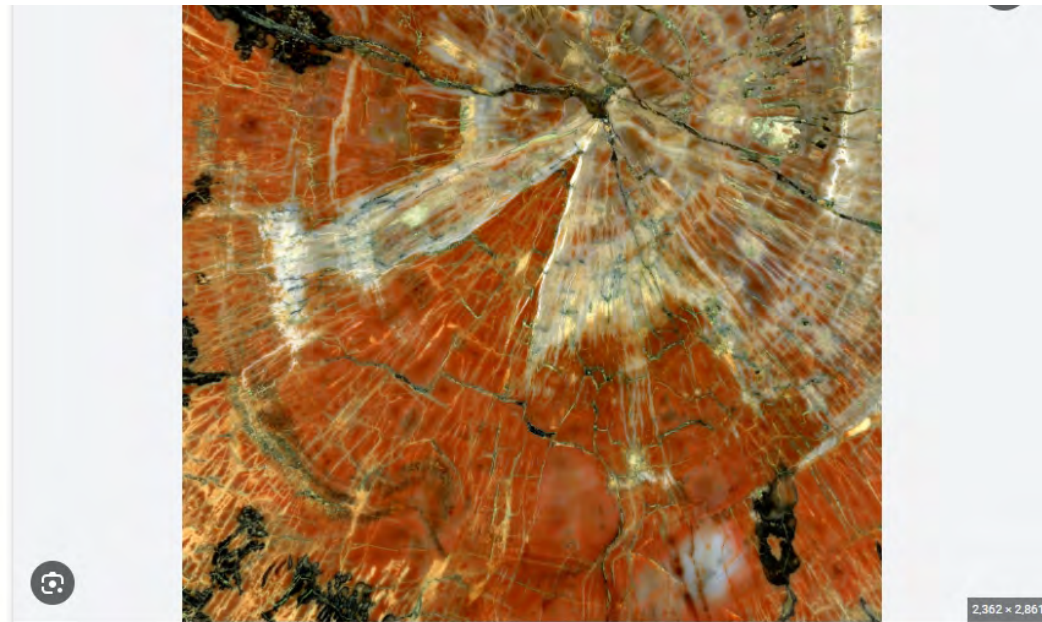
Visit

ireFly Crystals



Hematite in Quartz Tower w/ Feldspar Inclusions – FireFly Crystals

may be subject to copyright. Learn More



2,362 x 2,861



Pedestal Log – Blue Mesa

PETRIFIED FOREST

Petrified wood - Wikipedia

Visit



Largest Petrified Tree Stump (In The World!) - Rock Seeker

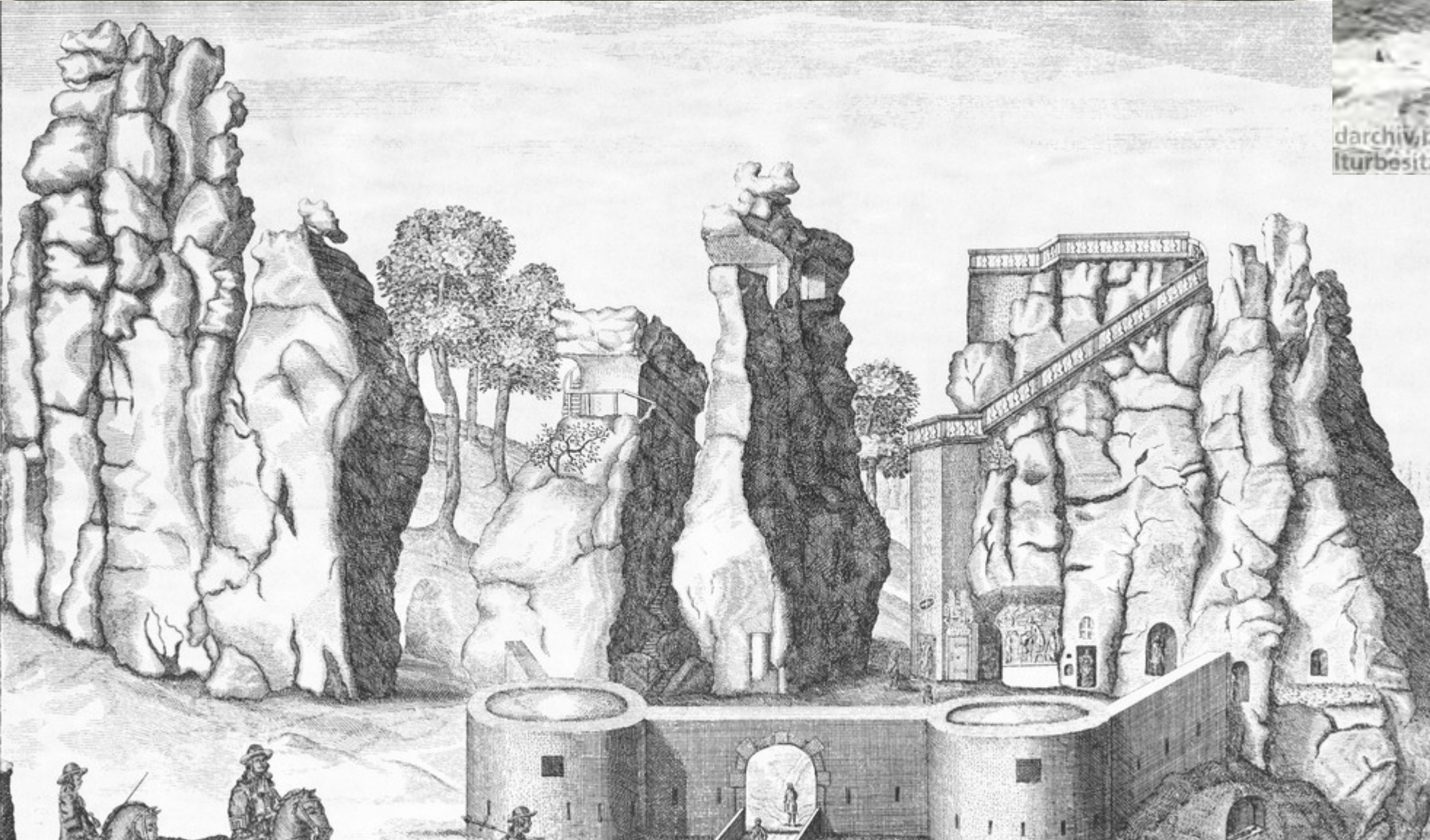


Mountain Photography Fine Art Prints from Matt Payne

Creator: Matt Payne  
Copyright: Matt Payne Photography

Visit

Externsteine, Germany





1,600 x 899

Big Stump (U.S. National Park Service)

Images may be subject to copyright. [Learn More](#)

[Visit](#)



2,960 x 1,589

Florissant, Colorado, is home to some of the biggest petrified tree stumps in the world.

[Visit](#)



1,920 x 1,075

Lesvos Early Miocene Petrified Forest - IUGS

Images may be subject to copyright. [Learn More](#)

[Visit](#)





Mount Asgard - Baffin Island - Canada



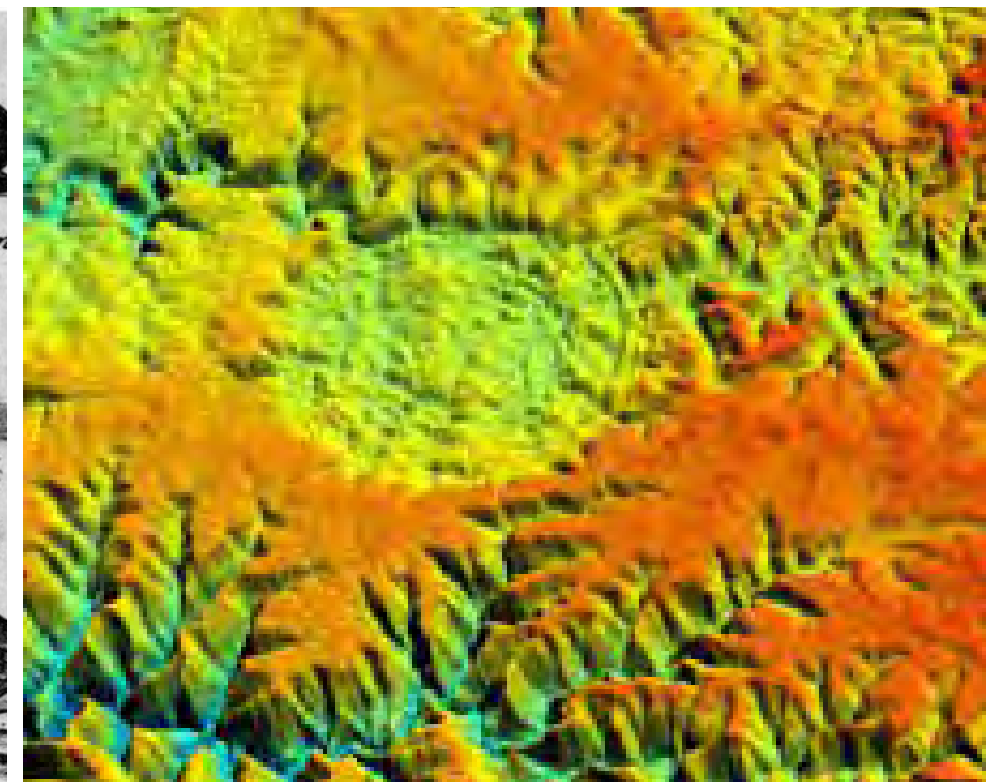
Smelting Slag Heap - 1908



388 TRACT. II. PART. VI. LIB. I.

Inter has species civitas *Bressia* numerari potest, cum ex triplici vel quadruplici fortificatione consistat.  
 Aliquando simplicis alicujus munimenti partes componuntur.  
 Bastiones enim civitatis *Augusta* duplici fortificantur Parapetta, quemadmodum infra docetur, *Num. 1.*  
 Erat etiam propugnaculum forte Venetorum, *Gerbi* dictum, in quo moenia oppidi inclusa fuerunt. Figura ejus irregularis: Situs enim loci sic voluit. Fosse aqua repleta, & pars verius mare latius à natura munita, *Num. 2.*

Radice





**MONTEREY,**  
*San J. de los Reyes Mt. in the rear of the Coloppe Falls*

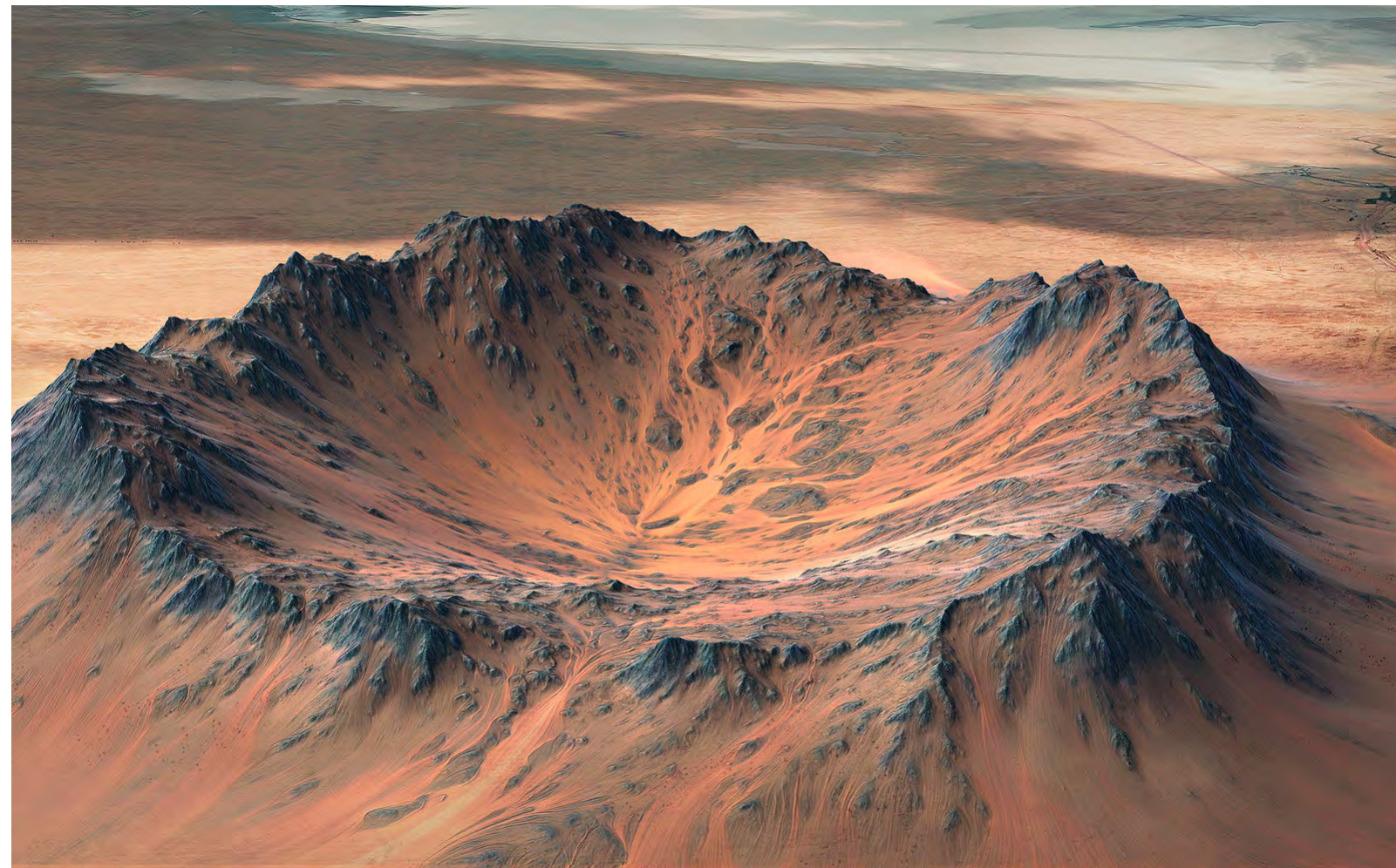
*1. Name of the (Spanish) Mission about 7 Miles distant?  
 2. View of the (Spanish) Mission?  
 3. View of the (Spanish) Mission from the (Spanish) Mission?  
 4. View of the (Spanish) Mission from the (Spanish) Mission?*

*1. Name of the (Spanish) Mission and (Spanish) Mission?  
 2. View of the (Spanish) Mission and (Spanish) Mission?  
 3. View of the (Spanish) Mission and (Spanish) Mission?  
 4. View of the (Spanish) Mission and (Spanish) Mission?*





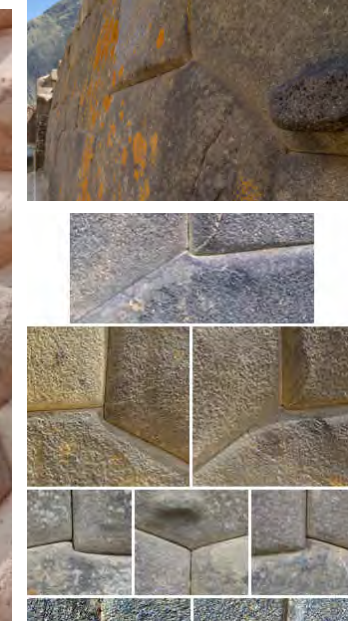
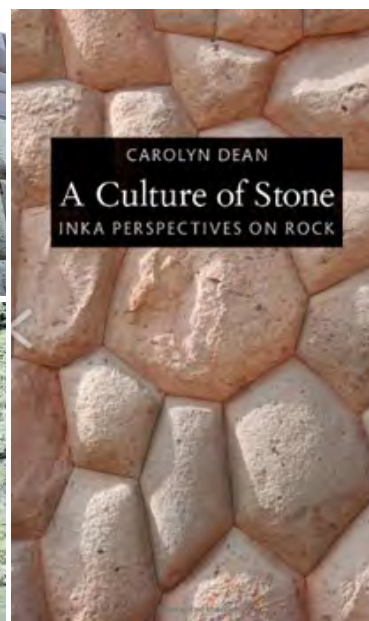
Aerial view of the Grabens, Canyonlands National Park







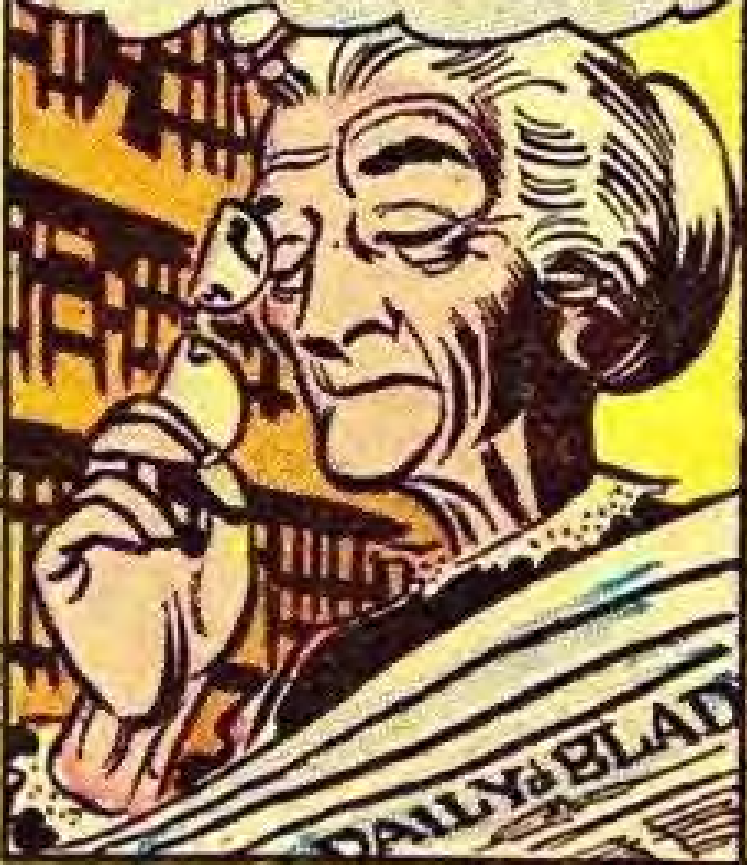
File:Feldspar blocks in monzogranite; Section 6, BLM.jpg - Wikimedia Commons



WE ACQUIRE OUR EMOTIONAL EDUCATION IN OUR EARLY CHILDHOOD! OUR FIRST CONTACTS...OUR PARENTS... OUR EARLY TEACHERS! SOMETIMES THEY TEACH US WRONG! YOU WERE TAUGHT WRONG!



THE NEWS IS WHAT'S LEFT OF THE TRUTH AFTER ITS MANIPULATION BY THE RULING CLASS



I CAN'T STAND IT! I WANT TO SEE THE WORLD I KNEW AGAIN!



TO BE CONTINUED...